

Automotive Data Solutions Inc.

INSTALL GUIDE ADS-TB-TL-EN

TL

AVAILABLE FOR: ADS-TB

Rev. Date: December 28, 2012

Doc. No.: ##10345##

20121213

VERSION FRANÇAISE DISPONIBLE EN LIGNE AU WWW.IDATALINK.COM

PLEASE VISIT WWW.IDATALINK.COM/SUPPORT FOR COMPLETE PRODUCT DETAILS

The brand names and logos found in this guide are property of their respective owners. Automotive Data Solutions Inc. © 2012

 **TOYOTA LEXUS SCION PONTIAC.**

NOTICE: The manufacturer will accept no responsibility for any electrical damage resulting from improper installation of this product, be that either damage to the vehicle itself or to the installed device. This device must be installed by a certified technician. This guide has been written for properly trained technicians; a certain level of skill & knowledge is therefore assumed. Please review the Installation Guide carefully before beginning any work.

INSTALL TYPE SELECTION

MAKE	MODEL	YEAR	INSTALL TYPE
TOYOTA	4Runner	99-02	1
	4Runner Regular key	03-10	2
	4Runner PTS	10	3
	Avalon	98-04	1
	Avalon	05-09	2 or 3
	Camry	98-02	1
	Camry	03-04	1 or 2
	Camry	05-06	2
	Camry	07-10	2 or 3
	Camry Hybrid	07-10	3
	Corolla	05-08	2
	Corolla	09-10	2 or 3
	FJ Cruiser	07-09	2
	Hiace	06-09	2
	Highlander	01-03	1
	Highlander	04-07	2
	Highlander	08-10	2 or 3
	Highlander Hybrid	06-07	5
	Highlander Hybrid	08-10	3
	Hilux	04-09	2
	Land Cruiser	98-02	1
	Land Cruiser	03-07	2
	Land Cruiser	08-10	3
	Matrix	05-10	2
	MR2 Spyder	00-05	1
	Prius	04-10	4
	RAV4	01-03	1
	RAV4	04-08	2
	RAV4	09-10	2 or 3
	Sequoia	01-07	1
	Sequoia	08-10	2
Sienna	99-03	1	
Sienna	04-10	2	
Solara	99-02	1	
Solara	03-04	1 or 2	
Solara	05-09	2	
Tacoma	05-10	2	
Tundra	06	1	
Tundra	07-09	2	
Venza Regular key only	09	2	
Yaris	06-11	2	

MAKE	MODEL	YEAR	INSTALL TYPE
LEXUS	ES 300	98-03	1
	ES 330	04-06	2
	ES 350	07-08	3
	GS 300	98-05	1
	GS 300	06	3
	GS 350	07-08	3
	GS 400	98-00	1
	GS 430	01-05	1
	GS 430	06-07	3
	GS 450 Hybrid	07-08	3
	GS 460	08	3
	GX 470	03-09	2
	IS 250	06-08	3
	IS 300	01-05	1
	IS 350	06-08	3
	IS-F	08	3
	LS 400	98-00	1
	LS 430	01-03	1
	LS 430	04-06	1 or 2
	LS 460	07-08	3
LS 600 Hybrid	08	3	
LX 470	98-02	1	
LX 470	03-07	2	
RX 300	99-03	1	
RX 330	04-06	2	
RX 350	07-09	2	
RX 400 Hybrid	06-08	5	
SC 300	98-00	1	
SC 400	98-00	1	
SC 430	02-09	1	
PONTIAC	Vibe	08-10	2
SCION	tC	05-10	2
	xB	08-10	2
	xD	08-10	2

NOTE

- I 1/2 - Type may vary by vehicle equipment level.
2/3 - Type may be standard key or push to start.
NC - Not covered
- II WARNING: Please advise that the install type numbers have changed since the last revision of this install guide.
- III Type 3 install provides simulated tach output for hybrid vehicles.

A hybrid vehicle might be running without its engine being running.
To determine whether a hybrid vehicle is running or not, look at the instrument cluster, radio and heating system.

“Push to Start” vehicles have a maximum take over time of 45 seconds: for security reasons, during the remote starter runtime, the driver must press the unlock button of the remote starter fob to trigger a 45 seconds time window which will permit him/her to step into the vehicle and press the brake pedal to complete take over.

TYPE 1 - WIRE CROSS REFERENCE CHART - 1 OF 5

MAKE	MODEL	YEAR	WIRE DESCRIPTION	CONNECTOR			POSITION	WIRE COLOR	POLARITY	MODULE LOCATION	COMPONENT LOCATOR
				NAME	COLOR	TYPE					
TOYOTA	4Runner	99-02	AMP	A	~	5 pin	1	White/Blue	(DATA)	Ignition switch	~
			Code	A	~	5 pin	2	Gray/Red	(DATA)	Ignition switch	~
			RXCK	A	~	5 pin	3	Red/Black	(DATA)	Ignition switch	~
			TXCT	A	~	5 pin	4	Pink/Black	(DATA)	Ignition switch	~
			Ground	A	~	5 pin	5	Brown	(-)	Ignition switch	~
			Key Sense	A	~	5 pin	~	Yellow/Red	(-)	Ignition switch	~
	Avalon	98-99	AMP	A	~	5 pin	1	LtGreen	(DATA)	Ignition switch	~
			Code	A	~	5 pin	2	Black/Red	(DATA)	Ignition switch	~
			RXCK	A	~	5 pin	3	Yellow	(DATA)	Ignition switch	~
			TXCT	A	~	5 pin	4	Green	(DATA)	Ignition switch	~
			Ground	A	~	5 pin	5	White/Black	(-)	Ignition switch	~
			Key Sense	A	~	5 pin	~	Red/Yellow	(-)	Ignition switch	~
	Avalon	00-04	AMP	A	~	5 pin	1	Black/White	(DATA)	Ignition switch	~
			Code	A	~	5 pin	2	Pink/Green	(DATA)	Ignition switch	~
			RXCK	A	~	5 pin	3	Blue/Orange	(DATA)	Ignition switch	~
			TXCT	A	~	5 pin	4	Blue/Yellow	(DATA)	Ignition switch	~
			Ground	A	~	5 pin	5	White/Black	(-)	Ignition switch	~
			Key Sense	A	~	5 pin	~	Red/White	(-)	Ignition switch	~
	Camry	98-01	AMP	A	~	5 pin	1	Black/Yellow	(DATA)	Ignition switch	~
			Code	A	~	5 pin	2	Green/White	(DATA)	Ignition switch	~
			RXCK	A	~	5 pin	3	Red/Blue	(DATA)	Ignition switch	~
			TXCT	A	~	5 pin	4	Blue/Yellow	(DATA)	Ignition switch	~
			Ground	A	~	5 pin	5	White/Black	(-)	Ignition switch	~
			Key Sense	A	~	5 pin	~	Blue/Black	(-)	Ignition switch	~
	Camry (4 cyl)	02-04	AMP	B	~	7 pin	1	Black/Red	(DATA)	Ignition switch	~
			Code	B	~	7 pin	4	Green/White	(DATA)	Ignition switch	~
			RXCK	B	~	7 pin	3	Red/Blue	(DATA)	Ignition switch	~
			TXCT	B	~	7 pin	5	Blue/Yellow	(DATA)	Ignition switch	~
			Ground	B	~	7 pin	7	White/Black	(-)	Ignition switch	~
			Key Sense	B	~	7 pin	~	Blue	(-)	Ignition switch	~
Camry (6cyl)	02-03	AMP	B	~	7 pin	1	Black/Red	(DATA)	Ignition switch	~	
		Code	B	~	7 pin	4	Green/White	(DATA)	Ignition switch	~	
		RXCK	B	~	7 pin	3	Red/Blue	(DATA)	Ignition switch	~	
		TXCT	B	~	7 pin	5	Blue/Yellow	(DATA)	Ignition switch	~	
		Ground	B	~	7 pin	7	White/Black	(-)	Ignition switch	~	
		Key Sense	B	~	7 pin	~	Blue	(-)	Ignition switch	~	
Highlander	01-03	AMP	B	~	7 pin	1	White	(DATA)	Ignition switch	~	
		Code	B	~	7 pin	4	Gray/Blue	(DATA)	Ignition switch	~	
		RXCK	B	~	7 pin	3	Pink	(DATA)	Ignition switch	~	
		TXCT	B	~	7 pin	5	Gray	(DATA)	Ignition switch	~	
		Ground	B	~	7 pin	7	White/Black	(-)	Ignition switch	~	
		Key Sense	B	~	7 pin	~	Blue	(-)	Ignition switch	~	

TYPE 1 - WIRE CROSS REFERENCE CHART - 2 OF 5

MAKE	MODEL	YEAR	WIRE DESCRIPTION	CONNECTOR			POSITION	WIRE COLOR	POLARITY	MODULE LOCATION	COMPONENT LOCATOR
				NAME	COLOR	TYPE					
TOYOTA	Land Cruiser	98-02	AMP	E	~	6 pin	1	Black/Yellow	(DATA)	Ignition switch	~
			Code	E	~	6 pin	2	Blue/Black	(DATA)	Ignition switch	~
			RXCK	E	~	6 pin	3	Purple/Green	(DATA)	Ignition switch	~
			TXCT	E	~	6 pin	4	Red/Yellow	(DATA)	Ignition switch	~
			Ground	E	~	6 pin	5	White/Black	(-)	Ignition switch	~
			Key Sense	E	~	6 pin	~	Red/Black	(-)	Ignition switch	~
	MR2 Spyder	00-05	AMP	C	~	5 pin	5	Black	(DATA)	Ignition switch	~
			Code	C	~	5 pin	2	Blue/Yellow	(DATA)	Ignition switch	~
			RXCK	C	~	5 pin	4	Yellow	(DATA)	Ignition switch	~
			TXCT	C	~	5 pin	1	Blue/Black	(DATA)	Ignition switch	~
			Ground	C	~	5 pin	3	White/Black	(-)	Ignition switch	~
			Key Sense	C	~	5 pin	~	Yellow/Red	(-)	Ignition switch	~
	RAV4	01-03	AMP	C	~	5 pin	5	Black/Red	(DATA)	Ignition switch	~
			Code	C	~	5 pin	2	Yellow/Green	(DATA)	Ignition switch	~
			RXCK	C	~	5 pin	4	Yellow	(DATA)	Ignition switch	~
			TXCT	C	~	5 pin	1	Yellow/Black	(DATA)	Ignition switch	~
			Ground	C	~	5 pin	3	White/Black	(-)	Ignition switch	~
			Key Sense	C	~	5 pin	~	Blue/Red	(-)	Ignition switch	~
	Sequoia	01-02	AMP	D	~	6 pin	1	Black/Red	(DATA)	Ignition switch	~
			Code	D	~	6 pin	4	Red/Yellow	(DATA)	Ignition switch	~
			RXCK	D	~	6 pin	5	LtGreen	(DATA)	Ignition switch	~
			TXCT	D	~	6 pin	6	Yellow/Green	(DATA)	Ignition switch	~
			Ground	D	~	6 pin	2	Orange	(-)	Ignition switch	~
			Key Sense	D	~	6 pin	~	Yellow/Green	(-)	Ignition switch	~
	Sequoia	03-07	AMP	D	~	6 pin	1	Gray/Black	(DATA)	Ignition switch	~
			Code	D	~	6 pin	4	Red/Yellow	(DATA)	Ignition switch	~
			RXCK	D	~	6 pin	5	LtGreen	(DATA)	Ignition switch	~
			TXCT	D	~	6 pin	6	Yellow/Green	(DATA)	Ignition switch	~
			Ground	D	~	6 pin	2	Gray/LtBlue	(-)	Ignition switch	~
			Key Sense	D	~	6 pin	~	Yellow/Green	(-)	Ignition switch	~
Sienna	99-03	AMP	A	~	5 pin	1	Black/Red	(DATA)	Ignition switch	~	
		Code	A	~	5 pin	2	Brown/White	(DATA)	Ignition switch	~	
		RXCK	A	~	5 pin	3	Brown/Red	(DATA)	Ignition switch	~	
		TXCT	A	~	5 pin	4	Brown/Yellow	(DATA)	Ignition switch	~	
		Ground	A	~	5 pin	5	White/Black	(-)	Ignition switch	~	
		Key Sense	A	~	5 pin	~	Blue/Black	(-)	Ignition switch	~	
Solara	99-03	AMP	A	~	5 pin	1	Red	(DATA)	Ignition switch	~	
		Code	A	~	5 pin	2	Green/White	(DATA)	Ignition switch	~	
		RXCK	A	~	5 pin	3	Red/Blue	(DATA)	Ignition switch	~	
		TXCT	A	~	5 pin	4	Blue/Yellow	(DATA)	Ignition switch	~	
		Ground	A	~	5 pin	5	White/Black	(-)	Ignition switch	~	
		Key Sense	A	~	5 pin	~	Blue/Black	(-)	Ignition switch	~	

TYPE 1 - WIRE CROSS REFERENCE CHART - 3 OF 5

MAKE	MODEL	YEAR	WIRE DESCRIPTION	CONNECTOR			POSITION	WIRE COLOR	POLARITY	MODULE LOCATION	COMPONENT LOCATOR
				NAME	COLOR	TYPE					
TOYOTA	Tundra S. Cab	06	AMP	D	~	6 pin	1	Red	(DATA)	Ignition switch	~
			Code	D	~	6 pin	3	Green	(DATA)	Ignition switch	~
			RXCK	D	~	6 pin	4	Blue/Red	(DATA)	Ignition switch	~
			TXCT	D	~	6 pin	5	Gray	(DATA)	Ignition switch	~
			Ground	D	~	6 pin	2	Pink	(-)	Ignition switch	~
			Key Sense	D	~	6 pin	~	Pink/Black	(-)	Ignition switch	~
	Tundra D. Cab	06	AMP	D	~	6 pin	1	White	(DATA)	Ignition switch	~
			Code	D	~	6 pin	4	Green	(DATA)	Ignition switch	~
			RXCK	D	~	6 pin	5	Red	(DATA)	Ignition switch	~
			TXCT	D	~	6 pin	6	Black	(DATA)	Ignition switch	~
			Ground	D	~	6 pin	2	Gray	(-)	Ignition switch	~
			Key Sense	D	~	6 pin	~	Yellow/Green	(-)	Ignition switch	~
LEXUS	ES300	98-01	AMP	A	~	5 pin	1	Black/Yellow	(DATA)	Ignition switch	~
			Code	A	~	5 pin	2	Green/White	(DATA)	Ignition switch	~
			RXCK	A	~	5 pin	3	Red/Blue	(DATA)	Ignition switch	~
			TXCT	A	~	5 pin	4	Blue/Yellow	(DATA)	Ignition switch	~
			Ground	A	~	5 pin	5	White/Black	(-)	Ignition switch	~
			Key Sense	A	~	5 pin	~	Blue/Black	(-)	Ignition switch	~
	ES300	02-03	AMP	B	~	7 pin	1	Black/Red	(DATA)	Ignition switch	~
			Code	B	~	7 pin	4	Green/White	(DATA)	Ignition switch	~
			RXCK	B	~	7 pin	3	Red/Blue	(DATA)	Ignition switch	~
			TXCT	B	~	7 pin	5	Blue/Yellow	(DATA)	Ignition switch	~
			Ground	B	~	7 pin	7	White/Black	(-)	Ignition switch	~
			Key Sense	B	~	7 pin	~	Blue	(-)	Ignition switch	~
	GS 300	98-00	AMP	E	~	6 pin	1	Black/Red	(DATA)	Ignition switch	~
			Code	E	~	6 pin	2	Green/Black	(DATA)	Ignition switch	~
			RXCK	E	~	6 pin	3	Black/White	(DATA)	Ignition switch	~
			TXCT	E	~	6 pin	4	Blue/Red	(DATA)	Ignition switch	~
			Ground	E	~	6 pin	5	White/Black	(-)	Ignition switch	~
			Key Sense	E	~	6 pin	~	Yellow	(-)	Ignition switch	~
	GS 300	01-05	AMP	A	~	5 pin	1	Black/Red	(DATA)	Ignition switch	~
			Code	A	~	5 pin	2	Green/Black	(DATA)	Ignition switch	~
			RXCK	A	~	5 pin	3	Black/White	(DATA)	Ignition switch	~
			TXCT	A	~	5 pin	4	Blue/Red	(DATA)	Ignition switch	~
			Ground	A	~	5 pin	5	White/Black	(-)	Ignition switch	~
			Key Sense	A	~	5 pin	~	Yellow	(-)	Ignition switch	~
GS 400	98-00	AMP	E	~	6 pin	1	Black/Red	(DATA)	Ignition switch	~	
		Code	E	~	6 pin	2	Green/Black	(DATA)	Ignition switch	~	
		RXCK	E	~	6 pin	3	Black/White	(DATA)	Ignition switch	~	
		TXCT	E	~	6 pin	4	Blue/Red	(DATA)	Ignition switch	~	
		Ground	E	~	6 pin	5	White/Black	(-)	Ignition switch	~	
		Key Sense	E	~	6 pin	~	Yellow	(-)	Ignition switch	~	

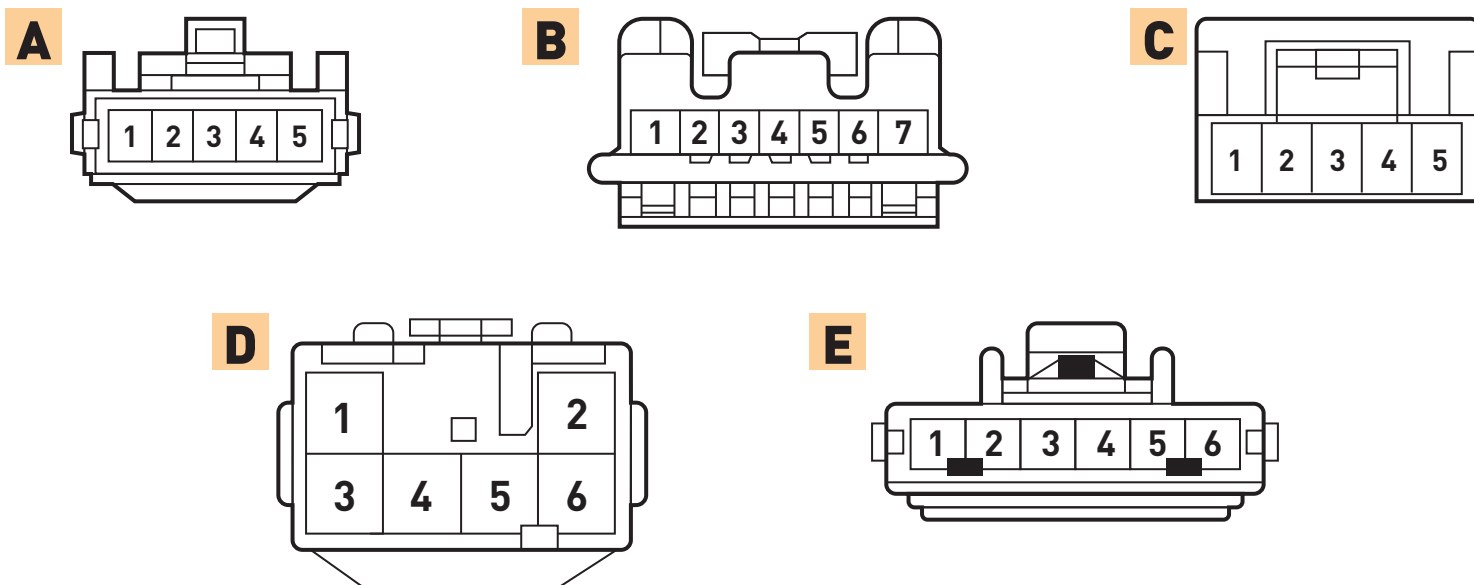
TYPE 1 - WIRE CROSS REFERENCE CHART - 4 OF 5

MAKE	MODEL	YEAR	WIRE DESCRIPTION	CONNECTOR			POSITION	WIRE COLOR	POLARITY	MODULE LOCATION	COMPONENT LOCATOR
				NAME	COLOR	TYPE					
LEXUS	GS 430	01-05	AMP	A	~	5 pin	1	Black/Red	(DATA)	Ignition switch	~
			Code	A	~	5 pin	2	Green/Black	(DATA)	Ignition switch	~
			RXCK	A	~	5 pin	3	Black/White	(DATA)	Ignition switch	~
			TXCT	A	~	5 pin	4	Blue/Red	(DATA)	Ignition switch	~
			Ground	A	~	5 pin	5	White/Black	(-)	Ignition switch	~
			Key Sense	A	~	5 pin	~	Yellow	(-)	Ignition switch	~
	IS 300	01	AMP	A	~	5 pin	1	Black/Red	(DATA)	Ignition switch	~
			Code	A	~	5 pin	2	Green	(DATA)	Ignition switch	~
			RXCK	A	~	5 pin	3	Purple	(DATA)	Ignition switch	~
			TXCT	A	~	5 pin	4	Pink	(DATA)	Ignition switch	~
			Ground	A	~	5 pin	5	White/Black	(-)	Ignition switch	~
			Key Sense	A	~	5 pin	~	Black/Yellow	(-)	Ignition switch	~
	IS 300	02-05	AMP	A	~	5 pin	1	Black/Red	(DATA)	Ignition switch	~
			Code	A	~	5 pin	2	Green/Black	(DATA)	Ignition switch	~
			RXCK	A	~	5 pin	3	Purple	(DATA)	Ignition switch	~
			TXCT	A	~	5 pin	4	Pink/Black	(DATA)	Ignition switch	~
			Ground	A	~	5 pin	5	White/Black	(-)	Ignition switch	~
			Key Sense	A	~	5 pin	~	Black/Yellow	(-)	Ignition switch	~
	LS 400	98-00	AMP	A	~	5 pin	1	White	(DATA)	Ignition switch	~
			Code	A	~	5 pin	2	Red/White	(DATA)	Ignition switch	~
			RXCK	A	~	5 pin	3	Red/Black	(DATA)	Ignition switch	~
			TXCT	A	~	5 pin	4	Red	(DATA)	Ignition switch	~
			Ground	A	~	5 pin	5	White/Black	(-)	Ignition switch	~
			Key Sense	A	~	5 pin	~	Yellow	(-)	Ignition switch	~
	LS 430	01-03	AMP	B	~	7 pin	1	Orange	(DATA)	Ignition switch	~
			Code	B	~	7 pin	4	Red/White	(DATA)	Ignition switch	~
			RXCK	B	~	7 pin	3	White/Red	(DATA)	Ignition switch	~
			TXCT	B	~	7 pin	5	LtBlue/Black	(DATA)	Ignition switch	~
			Ground	B	~	7 pin	7	Violet	(-)	Ignition switch	~
			Key Sense	B	~	7 pin	~	LtGreen/Black	(-)	Ignition switch	~
LS 430 (Smartkey)	04-06	AMP	B	~	7 pin	1	Red	(DATA)	Ignition switch	~	
		Code	B	~	7 pin	4	Orange	(DATA)	Ignition switch	~	
		RXCK	B	~	7 pin	3	LtBlue	(DATA)	Ignition switch	~	
		TXCT	B	~	7 pin	5	Yellow/Black	(DATA)	Ignition switch	~	
		Ground	B	~	7 pin	7	Violet	(-)	Ignition switch	~	
		Key Sense	B	~	7 pin	~	LtGreen/Black	(-)	Ignition switch	~	
LX 470	98-02	AMP	E	~	6 pin	1	Black/Yellow	(DATA)	Ignition switch	~	
		Code	E	~	6 pin	2	Blue/Black	(DATA)	Ignition switch	~	
		RXCK	E	~	6 pin	3	Purple/Green	(DATA)	Ignition switch	~	
		TXCT	E	~	6 pin	4	Red/Yellow	(DATA)	Ignition switch	~	
		Ground	E	~	6 pin	5	White/Black	(-)	Ignition switch	~	
		Key Sense	E	~	6 pin	~	Red/White	(-)	Ignition switch	~	

TYPE 1 - WIRE CROSS REFERENCE CHART - 5 OF 5

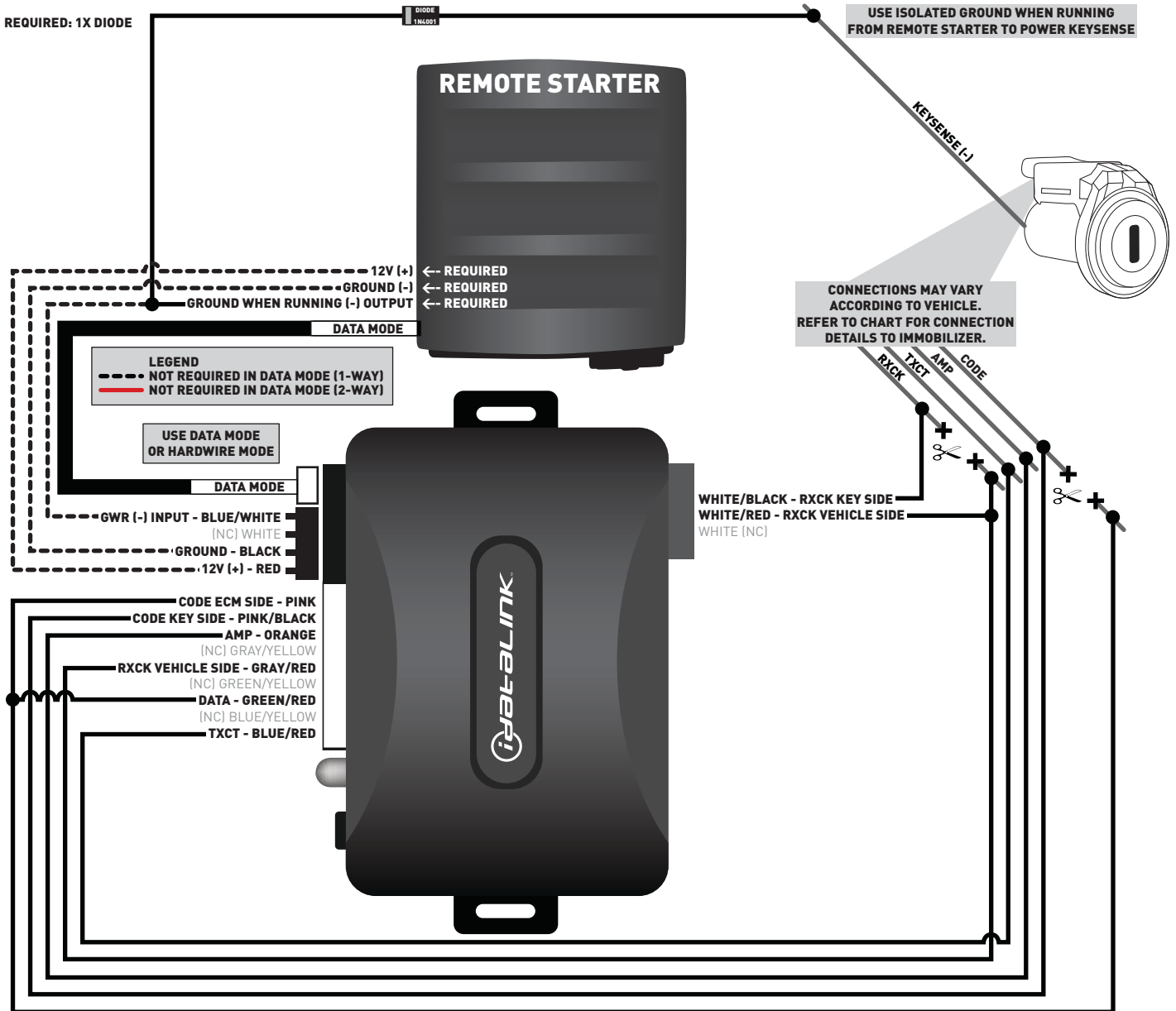
MAKE	MODEL	YEAR	WIRE DESCRIPTION	CONNECTOR			POSITION	WIRE COLOR	POLARITY	MODULE LOCATION	COMPONENT LOCATOR
				NAME	COLOR	TYPE					
LEXUS	RX 300	99	AMP	A	~	5 pin	1	Blue/White	(DATA)	Ignition switch	~
			Code	A	~	5 pin	2	Purple	(DATA)	Ignition switch	~
			RXCK	A	~	5 pin	3	Black	(DATA)	Ignition switch	~
			TXCT	A	~	5 pin	4	Gray	(DATA)	Ignition switch	~
			Ground	A	~	5 pin	5	White/Black	(-)	Ignition switch	~
			Key Sense	A	~	5 pin	~	Blue	(-)	Ignition switch	~
	RX 300	00	AMP	A	~	5 pin	1	Blue/White	(DATA)	Ignition switch	~
			Code	A	~	5 pin	2	Purple	(DATA)	Ignition switch	~
			RXCK	A	~	5 pin	3	Pink	(DATA)	Ignition switch	~
			TXCT	A	~	5 pin	4	Gray	(DATA)	Ignition switch	~
			Ground	A	~	5 pin	5	White/Black	(-)	Ignition switch	~
			Key Sense	A	~	5 pin	~	Blue	(-)	Ignition switch	~
	RX 300	01-03	AMP	A	~	5 pin	1	Black/Red	(DATA)	Ignition switch	~
			Code	A	~	5 pin	2	Purple	(DATA)	Ignition switch	~
			RXCK	A	~	5 pin	3	Pink	(DATA)	Ignition switch	~
			TXCT	A	~	5 pin	4	Gray	(DATA)	Ignition switch	~
			Ground	A	~	5 pin	5	White/Black	(-)	Ignition switch	~
			Key Sense	A	~	5 pin	~	Blue	(-)	Ignition switch	~
	SC 300	98-00	AMP	A	~	5 pin	1	Black/Red	(DATA)	Ignition switch	~
			Code	A	~	5 pin	2	Black/Orange	(DATA)	Ignition switch	~
			RXCK	A	~	5 pin	3	Blue	(DATA)	Ignition switch	~
			TXCT	A	~	5 pin	4	Green/Orange	(DATA)	Ignition switch	~
			Ground	A	~	5 pin	5	White/Green	(-)	Ignition switch	~
			Key Sense	A	~	5 pin	~	Yellow	(-)	Ignition switch	~
SC 400	98-00	AMP	A	~	5 pin	1	Black/Red	(DATA)	Ignition switch	~	
		Code	A	~	5 pin	2	Black/Orange	(DATA)	Ignition switch	~	
		RXCK	A	~	5 pin	3	Blue	(DATA)	Ignition switch	~	
		TXCT	A	~	5 pin	4	Green/Orange	(DATA)	Ignition switch	~	
		Ground	A	~	5 pin	5	White/Green	(-)	Ignition switch	~	
		Key Sense	A	~	5 pin	~	Yellow	(-)	Ignition switch	~	
SC 430	02-09	AMP	A	~	5 pin	1	Yellow	(DATA)	Ignition switch	~	
		Code	A	~	5 pin	2	Violet/White	(DATA)	Ignition switch	~	
		RXCK	A	~	5 pin	3	Red	(DATA)	Ignition switch	~	
		TXCT	A	~	5 pin	4	Green	(DATA)	Ignition switch	~	
		Ground	A	~	5 pin	5	Violet	(-)	Ignition switch	~	
		Key Sense	A	~	5 pin	~	LtGreen/Black	(-)	Ignition switch	~	

TYPE 1 - COMPONENT LOCATOR - CONNECTORS



Connector located at immobilizer near key barrel or 8 inches lower on the immobilizer harness.

TYPE 1 - WIRING DIAGRAM



TYPE 2 - WIRE CROSS REFERENCE CHART - 1 OF 3

MAKE	MODEL	YEAR	WIRE DESCRIPTION	CONNECTOR			POSITION	WIRE COLOR	POLARITY	MODULE LOCATION	COMPONENT LOCATOR
				NAME	COLOR	TYPE					
TOYOTA	4Runner	03-10	Code	~	~	7 pin	4	Pink/Green	(DATA)	Ignition switch	~
			TXCT	~	~	7 pin	5	LtGreen/Red	(DATA)	Ignition switch	~
			Keysense	~	~	7 pin	~	Green/Yellow	(-)	Ignition switch	~
	Avalon	05-09	Code	~	~	7 pin	4	LtGreen	(DATA)	Ignition switch	~
			TXCT	~	~	7 pin	5	Brown	(DATA)	Ignition switch	~
			Keysense	~	~	7 pin	~	Black	(-)	Ignition switch	~
	Camry	03-06	Code	~	~	7 pin	4	Green/White	(DATA)	Ignition switch	~
			TXCT	~	~	7 pin	5	Blue/Yellow	(DATA)	Ignition switch	~
			Keysense	~	~	7 pin	~	Blue	(-)	Ignition switch	~
	Camry	07-10	Code	~	~	7 pin	4	Brown	(DATA)	Ignition switch	~
			TXCT	~	~	7 pin	5	Red	(DATA)	Ignition switch	~
			Keysense	~	~	7 pin	~	Blue	(-)	Ignition switch	~
	Corolla	05-08	Code	~	~	7 pin	4	Blue	(DATA)	Ignition switch	~
			TXCT	~	~	7 pin	5	Green	(DATA)	Ignition switch	~
			Keysense	~	~	7 pin	~	Blue/Black	(-)	Ignition switch	~
	Corolla (Japan)	09-10	Code	~	~	7 pin	4	LtBlue	(DATA)	Ignition switch	~
			TXCT	~	~	7 pin	5	Beige	(DATA)	Ignition switch	~
			Keysense	~	~	7 pin	~	LtBlue	(-)	Ignition switch	~
	Corolla (Canada)	09-10	Code	~	~	7 pin	4	Pink	(DATA)	Ignition switch	~
			TXCT	~	~	7 pin	5	Green	(DATA)	Ignition switch	~
			Keysense	~	~	7 pin	~	LtBlue	(-)	Ignition switch	~
	FJ Cruiser	07-09	Code	~	~	7 pin	4	Pink/Green	(DATA)	Ignition switch	~
			TXCT	~	~	7 pin	5	LtGreen/Red	(DATA)	Ignition switch	~
			Keysense	~	~	7 pin	~	Green/Yellow	(-)	Ignition switch	~
	Hiace	06-09	Code	~	~	7 pin	4	Blue	(DATA)	Ignition switch	~
			TXCT	~	~	7 pin	5	Yellow	(DATA)	Ignition switch	~
			Keysense	~	~	7 pin	~	Yellow/Black	(-)	Ignition switch	~
	Highlander	04-07	Code	~	~	7 pin	4	Gray	(DATA)	Ignition switch	~
			TXCT	~	~	7 pin	5	White	(DATA)	Ignition switch	~
			Keysense	~	~	7 pin	~	Green	(-)	Ignition switch	~
Highlander	08-10	Code	~	~	7 pin	4	Red	(DATA)	Ignition switch	~	
		TXCT	~	~	7 pin	5	LtBlue	(DATA)	Ignition switch	~	
		Keysense	~	~	7 pin	~	LtBlue	(-)	Ignition switch	~	
Hilux	04-09	Code	~	~	7 pin	4	LtBlue/Yellow	(DATA)	Ignition switch	~	
		TXCT	~	~	7 pin	5	LtBlue/Black	(DATA)	Ignition switch	~	
		Keysense	~	~	7 pin	~	Green/Yellow	(-)	Ignition switch	~	
Land Cruiser	03-07	Code	~	~	7 pin	4	Blue/Black	(DATA)	Ignition switch	~	
		TXCT	~	~	7 pin	5	Violet/Green	(DATA)	Ignition switch	~	
		Keysense	~	~	7 pin	~	Red/Black	(-)	Ignition switch	~	
Matrix	05-08	Code	~	~	7 pin	4	Blue	(DATA)	Ignition switch	~	
		TXCT	~	~	7 pin	5	Green	(DATA)	Ignition switch	~	
		Keysense	~	~	7 pin	~	Blue/Black	(-)	Ignition switch	~	

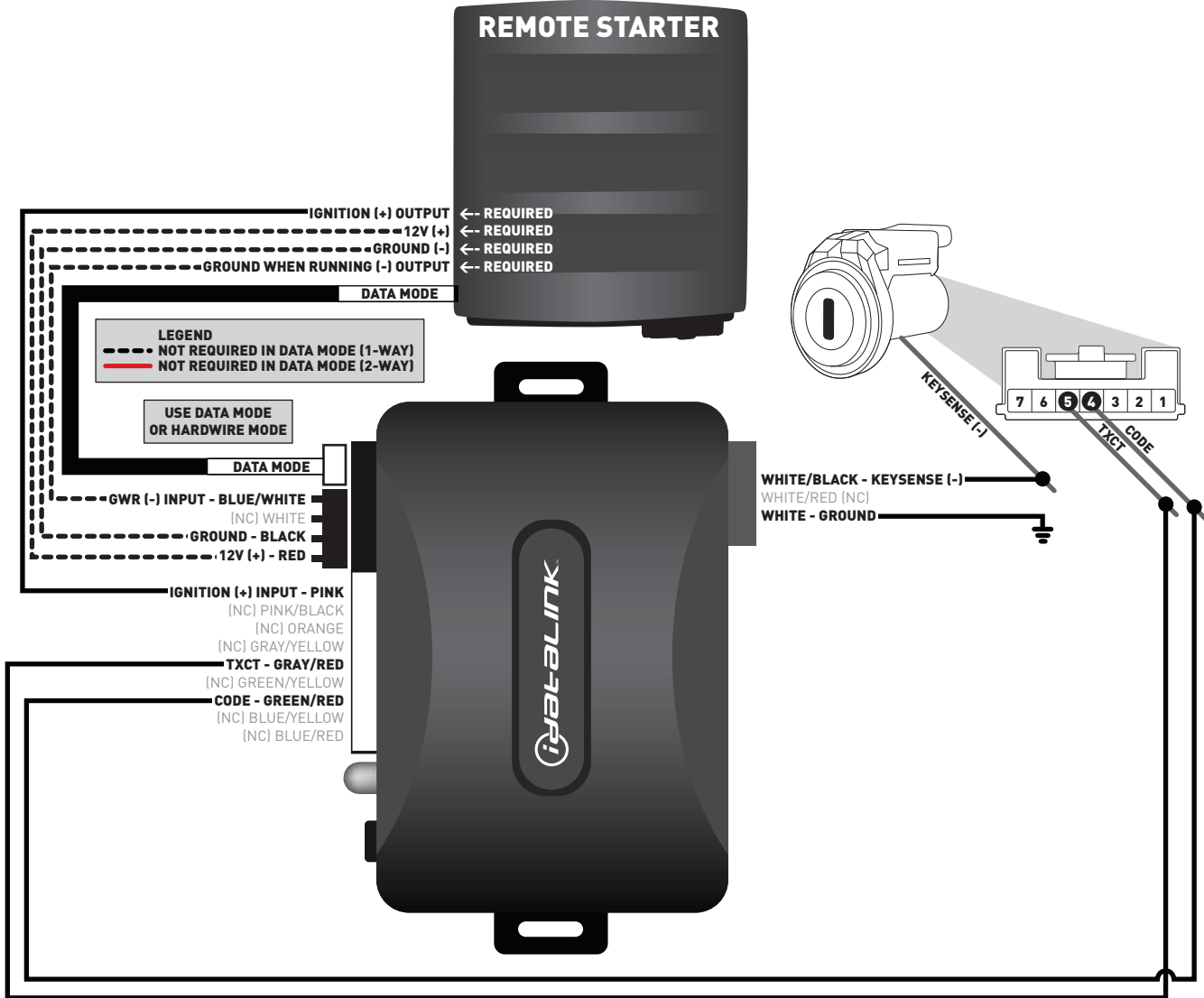
TYPE 2 - WIRE CROSS REFERENCE CHART - 2 OF 3

MAKE	MODEL	YEAR	WIRE DESCRIPTION	CONNECTOR			POSITION	WIRE COLOR	POLARITY	MODULE LOCATION	COMPONENT LOCATOR
				NAME	COLOR	TYPE					
TOYOTA	Matrix	09-10	Code	~	~	7 pin	4	LtBlue	(DATA)	Ignition switch	~
			TXCT	~	~	7 pin	5	Beige	(DATA)	Ignition switch	~
			Keysense	~	~	7 pin	~	Blue	(-)	Ignition switch	~
	RAV4	04-05	Code	~	~	7 pin	4	Blue/Red	(DATA)	Ignition switch	~
			TXCT	~	~	7 pin	5	Pink	(DATA)	Ignition switch	~
			Keysense	~	~	7 pin	~	Blue/Red	(-)	Ignition switch	~
	RAV4	06-10	Code	~	~	7 pin	4	Pink	(DATA)	Ignition switch	~
			TXCT	~	~	7 pin	5	Green	(DATA)	Ignition switch	~
			Keysense	~	~	7 pin	~	Blue	(-)	Ignition switch	~
	Sequoia	08-10	Code	~	~	7 pin	4	LtGreen	(DATA)	Ignition switch	~
			TXCT	~	~	7 pin	5	Blue	(DATA)	Ignition switch	~
			Keysense	~	~	7 pin	~	Gray	(-)	Ignition switch	~
	Sienna	04-10	Code	~	~	7 pin	4	Yellow	(DATA)	Ignition switch	~
			TXCT	~	~	7 pin	5	Yellow/Red	(DATA)	Ignition switch	~
			Keysense	~	~	7 pin	~	Blue/Black	(-)	Ignition switch	~
	Solara (Convertible)	04-09	Code	~	~	7 pin	4	Green/White	(DATA)	Ignition switch	~
			TXCT	~	~	7 pin	5	Blue/Yellow	(DATA)	Ignition switch	~
			Keysense	~	~	7 pin	~	Blue	(-)	Ignition switch	~
	Solara (Coupe)	04-09	Code	~	~	7 pin	4	Yellow	(DATA)	Ignition switch	~
			TXCT	~	~	7 pin	5	Yellow/Red	(DATA)	Ignition switch	~
			Keysense	~	~	7 pin	~	Blue	(-)	Ignition switch	~
Tacoma	05-10	Code	~	~	7 pin	4	Pink/Green	(DATA)	Ignition switch	~	
		TXCT	~	~	7 pin	5	LtGreen/Red	(DATA)	Ignition switch	~	
		Keysense	~	~	7 pin	~	Green/Black	(-)	Ignition switch	~	
Tundra	07-09	Code	~	~	7 pin	4	LtGreen	(DATA)	Ignition switch	~	
		TXCT	~	~	7 pin	5	Blue	(DATA)	Ignition switch	~	
		Keysense	~	~	7 pin	~	Gray	(-)	Ignition switch	~	
Venza	09	Code	~	~	7 pin	4	LtGreen	(DATA)	Ignition switch	~	
		TXCT	~	~	7 pin	5	Brown	(DATA)	Ignition switch	~	
		Keysense	~	~	7 pin	~	Brown	(-)	Ignition switch	~	
Yaris	06-11	Code	~	~	7 pin	4	Green	(DATA)	Ignition switch	~	
		TXCT	~	~	7 pin	5	Violet	(DATA)	Ignition switch	~	
		Keysense	~	~	7 pin	~	Yellow	(-)	Ignition switch	~	
LEXUS	ES 330	04-06	Code	~	~	7 pin	4	Green/White	(DATA)	Ignition switch	~
			TXCT	~	~	7 pin	5	Blue/Yellow	(DATA)	Ignition switch	~
			Keysense	~	~	7 pin	~	Blue	(-)	Ignition switch	~
	GX 470	03-09	Code	~	~	7 pin	4	Yellow	(DATA)	Ignition switch	~
			TXCT	~	~	7 pin	5	Yellow/Black	(DATA)	Ignition switch	~
			Keysense	~	~	7 pin	~	Green/Yellow	(-)	Ignition switch	~
	LS 430	04-06	Code	~	~	7 pin	4	Red/White	(DATA)	Ignition switch	~
			TXCT	~	~	7 pin	5	Blue/Black	(DATA)	Ignition switch	~
			Keysense	~	~	7 pin	~	LtGreen/Black	(-)	Ignition switch	~

TYPE 2 - WIRE CROSS REFERENCE CHART - 3 OF 3

MAKE	MODEL	YEAR	WIRE DESCRIPTION	CONNECTOR			POSITION	WIRE COLOR	POLARITY	MODULE LOCATION	COMPONENT LOCATOR
				NAME	COLOR	TYPE					
LEXUS	LX 470	03-07	Code	~	~	7 pin	4	Blue/Black	(DATA)	Ignition switch	~
			TXCT	~	~	7 pin	5	Violet/Green	(DATA)	Ignition switch	~
			Keysense	~	~	7 pin	~	Red/Black	(-)	Ignition switch	~
	RX 330	04-06	Code	~	~	7 pin	4	LtGreen	(DATA)	Ignition switch	~
			TXCT	~	~	7 pin	5	Brown	(DATA)	Ignition switch	~
			Keysense	~	~	7 pin	~	Black	(-)	Ignition switch	~
	RX 350	07-08	Code	~	~	7 pin	4	LtGreen	(DATA)	Ignition switch	~
			TXCT	~	~	7 pin	5	Brown	(DATA)	Ignition switch	~
			Keysense	~	~	7 pin	~	Black	(-)	Ignition switch	~
PONTIAC	Vibe	08	Code	~	~	7 pin	4	Blue	(DATA)	Ignition switch	~
			TXCT	~	~	7 pin	5	Green	(DATA)	Ignition switch	~
			Keysense	~	~	7 pin	~	Blue/Black	(-)	Ignition switch	~
	Vibe	09-10	Code	~	~	7 pin	4	LtBlue	(DATA)	Ignition switch	~
			TXCT	~	~	7 pin	5	Beige	(DATA)	Ignition switch	~
			Keysense	~	~	7 pin	~	Blue	(-)	Ignition switch	~
SCION	tC	05-10	Code	~	~	7 pin	4	Yellow	(DATA)	Ignition switch	~
			TXCT	~	~	7 pin	5	Red	(DATA)	Ignition switch	~
			Keysense	~	~	7 pin	~	Black	(-)	Ignition switch	~
	xB	08-10	Code	~	~	7 pin	4	LtBlue	(DATA)	Ignition switch	~
			TXCT	~	~	7 pin	5	Beige	(DATA)	Ignition switch	~
			Keysense	~	~	7 pin	~	LtBlue	(-)	Ignition switch	~
	xD	08-10	Code	~	~	7 pin	4	Green	(DATA)	Ignition switch	~
			TXCT	~	~	7 pin	5	Violet	(DATA)	Ignition switch	~
			Keysense	~	~	7 pin	~	Yellow	(-)	Ignition switch	~

TYPE 2 - WIRING DIAGRAM



TYPE 3 - WIRE CROSS REFERENCE CHART - 1 OF 3

MAKE	MODEL	YEAR	WIRE DESCRIPTION	CONNECTOR			POSITION	WIRE COLOR	POLARITY	MODULE LOCATION	COMPONENT LOCATOR
				NAME	COLOR	TYPE					
TOYOTA	4Runner PTS	10	Code	~	~	16 pin	10	Violet	(DATA)	Push to Start	~
			TXCT	~	~	16 pin	9	White	(DATA)	Push to Start	~
			Push to Start	~	~	16 pin	7	LtGreen	(-)	Push to Start	~
			Ignition	A	~	4 pin	4	White	(+)	Brake switch above brake pedal	~
			12V (Brake)	A	~	4 pin	2	Red	(+)	Brake switch above brake pedal	~
			Brake	A	~	4 pin	1	Violet/Green	(+)	Brake switch above brake pedal	~
	Avalon (smartkey)	05-09	Code	~	~	16 pin	10	White	(DATA)	Push to Start	~
			TXCT	~	~	16 pin	9	Gray	(DATA)	Push to Start	~
			Push to Start	~	~	16 pin	7	Blue	(-)	Push to Start	~
			Ignition	A	~	4 pin	3	Brown	(+)	Brake switch above brake pedal	~
			12V (Brake)	A	~	4 pin	2	Black	(+)	Brake switch above brake pedal	~
			Brake	A	~	4 pin	1	White	(+)	Brake switch above brake pedal	~
	Camry Hybrid	07-10	Code	~	~	16 pin	10	White	(DATA)	Push to Start	~
			TXCT	~	~	16 pin	9	Gray	(DATA)	Push to Start	~
			Push to Start	~	~	16 pin	7	Blue	(-)	Push to Start	~
			Ignition	A	~	4 pin	3	Black	(+)	Brake switch above brake pedal	~
			12V (Brake)	A	~	4 pin	2	Black	(+)	Brake switch above brake pedal	~
			Brake	A	~	4 pin	1	White	(+)	Brake switch above brake pedal	~
	Camry (smartkey)	07-10	Code	~	~	16 pin	10	White	(DATA)	Push to Start	~
			TXCT	~	~	16 pin	9	Gray	(DATA)	Push to Start	~
			Push to Start	~	~	16 pin	7	Blue	(-)	Push to Start	~
			Ignition	A	~	4 pin	3	Black	(+)	Brake switch above brake pedal	~
			12V (Brake)	A	~	4 pin	2	Black	(+)	Brake switch above brake pedal	~
			Brake	A	~	4 pin	1	Blue	(+)	Brake switch above brake pedal	~
	Corolla (smartkey)	09-10	Code	~	~	16 pin	10	Green	(DATA)	Push to Start	~
			TXCT	~	~	16 pin	9	LtBlue	(DATA)	Push to Start	~
			Push to Start	~	~	16 pin	7	White	(-)	Push to Start	~
			Ignition	A	~	4 pin	3	Black	(+)	Brake switch above brake pedal	~
12V (Brake)			A	~	4 pin	2	White	(+)	Brake switch above brake pedal	~	
Brake			A	~	4 pin	1	Blue	(+)	Brake switch above brake pedal	~	
Highlander (smartkey)	08-10	Code	~	~	16 pin	10	Gray	(DATA)	Push to Start	~	
		TXCT	~	~	16 pin	9	Orange	(DATA)	Push to Start	~	
		Push to Start	~	~	16 pin	7	Pink	(-)	Push to Start	~	
		Ignition	A	~	4 pin	3	White	(+)	Brake switch above brake pedal	~	
		12V (Brake)	A	~	4 pin	2	Violet	(+)	Brake switch above brake pedal	~	
		Brake	A	~	4 pin	1	Blue	(+)	Brake switch above brake pedal	~	
Highlander Hybrid	08-10	Code	~	~	16 pin	10	Gray	(DATA)	Push to Start	~	
		TXCT	~	~	16 pin	9	Orange	(DATA)	Push to Start	~	
		Push to Start	~	~	16 pin	7	Pink	(-)	Push to Start	~	
		Ignition	A	~	4 pin	3	White	(+)	Brake switch above brake pedal	~	
		12V (Brake)	A	~	4 pin	2	Violet	(+)	Brake switch above brake pedal	~	
		Brake	A	~	4 pin	1	Blue	(+)	Brake switch above brake pedal	~	

TYPE 3 - WIRE CROSS REFERENCE CHART - 2 OF 3

MAKE	MODEL	YEAR	WIRE DESCRIPTION	CONNECTOR			POSITION	WIRE COLOR	POLARITY	MODULE LOCATION	COMPONENT LOCATOR
				NAME	COLOR	TYPE					
TOYOTA	Land Cruiser	08-10	Code	~	~	16 pin	10	Green	(DATA)	Push to Start	~
			TXCT	~	~	16 pin	9	LtBlue	(DATA)	Push to Start	~
			Push to Start	~	~	16 pin	7	Black	(-)	Push to Start	~
			Ignition	B	~	4 pin	3	Black	(+)	Brake switch above brake pedal	~
			12V (Brake)	B	~	4 pin	2	Blue/Black	(+)	Brake switch above brake pedal	~
			Brake	B	~	4 pin	1	Red	(+)	Brake switch above brake pedal	~
	RAV4 (Smartkey)	09-10	Code	~	~	16 pin	10	White	(DATA)	Push to Start	~
			TXCT	~	~	16 pin	9	Blue	(DATA)	Push to Start	~
			Push to Start	~	~	16 pin	7	White	(-)	Push to Start	~
			Ignition	B	~	4 pin	4	Black	(+)	Brake switch above brake pedal	~
			12V (Brake)	B	~	4 pin	2	White	(+)	Brake switch above brake pedal	~
			Brake	B	~	4 pin	1	Blue	(+)	Brake switch above brake pedal	~
LEXUS	ES 350	07-08	Code	~	~	16 pin	10	White	(DATA)	Push to Start	~
			TXCT	~	~	16 pin	9	Gray	(DATA)	Push to Start	~
			Push to Start	~	~	16 pin	7	Blue	(-)	Push to Start	~
			Ignition	A	~	4 pin	3	Black	(+)	Brake switch above brake pedal	~
			12V (Brake)	A	~	4 pin	2	Black	(+)	Brake switch above brake pedal	~
			Brake	A	~	4 pin	1	Blue	(+)	Brake switch above brake pedal	~
	GS 300	06	Code	~	~	16 pin	10	Yellow	(DATA)	Push to Start	~
			TXCT	~	~	16 pin	9	Blue	(DATA)	Push to Start	~
			Push to Start	~	~	16 pin	7	Pink	(-)	Push to Start	~
			Ignition	B	~	4 pin	3	Black/White	(+)	Brake switch above brake pedal	~
			12V (Brake)	A	~	4 pin	2	Blue/White	(+)	Brake switch above brake pedal	~
			Brake	B	~	4 pin	1	Red/Black	(+)	Brake switch above brake pedal	~
	GS 350	07-08	Code	~	~	16 pin	10	Yellow	(DATA)	Push to Start	~
			TXCT	~	~	16 pin	9	Blue	(DATA)	Push to Start	~
			Push to Start	~	~	16 pin	7	Pink	(-)	Push to Start	~
			Ignition	B	~	4 pin	3	Black/White	(+)	Brake switch above brake pedal	~
			12V (Brake)	B	~	4 pin	2	Blue/White	(+)	Brake switch above brake pedal	~
			Brake	B	~	4 pin	1	Red/Black	(+)	Brake switch above brake pedal	~
	GS 430	06-07	Code	~	~	16 pin	10	Yellow	(DATA)	Push to Start	~
			TXCT	~	~	16 pin	9	Blue	(DATA)	Push to Start	~
			Push to Start	~	~	16 pin	7	Pink	(-)	Push to Start	~
			Ignition	B	~	4 pin	3	Black/White	(+)	Brake switch above brake pedal	~
			12V (Brake)	B	~	4 pin	2	Blue/White	(+)	Brake switch above brake pedal	~
			Brake	B	~	4 pin	1	Red/Black	(+)	Brake switch above brake pedal	~
GS 450 Hybrid	07-08	Code	~	~	16 pin	10	Yellow	(DATA)	Push to Start	~	
		TXCT	~	~	16 pin	9	Blue	(DATA)	Push to Start	~	
		Push to Start	~	~	16 pin	7	Pink	(-)	Push to Start	~	
		Ignition	B	~	4 pin	3	Black/White	(+)	Brake switch above brake pedal	~	
		12V (Brake)	B	~	4 pin	2	Blue/White	(+)	Brake switch above brake pedal	~	
		Brake	B	~	4 pin	1	Red/Black	(+)	Brake switch above brake pedal	~	

TYPE 3 - WIRE CROSS REFERENCE CHART - 3 OF 3

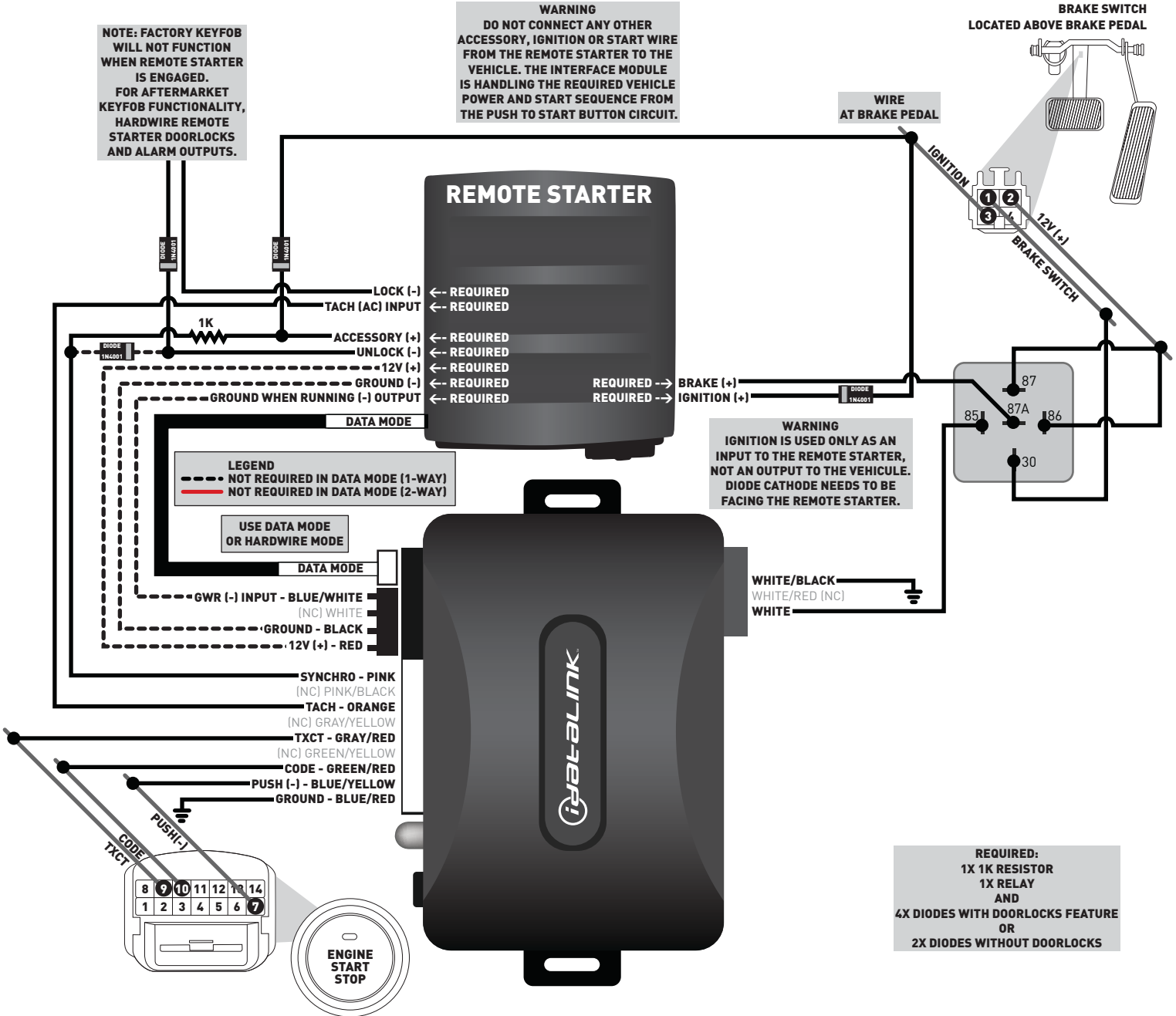
MAKE	MODEL	YEAR	WIRE DESCRIPTION	CONNECTOR			POSITION	WIRE COLOR	POLARITY	MODULE LOCATION	COMPONENT LOCATOR
				NAME	COLOR	TYPE					
LEXUS	GS 460	08	Code	~	~	16 pin	10	Yellow	(DATA)	Push to Start	~
			TXCT	~	~	16 pin	9	Blue	(DATA)	Push to Start	~
			Push to Start	~	~	16 pin	7	Pink	(-)	Push to Start	~
			Ignition	B	~	4 pin	3	Black/White	(+)	Brake switch above brake pedal	~
			12V (Brake)	B	~	4 pin	2	Blue/White	(+)	Brake switch above brake pedal	~
			Brake	B	~	4 pin	1	Red/Black	(+)	Brake switch above brake pedal	~
	IS 250	06-08	Code	~	~	16 pin	10	LtBlue	(DATA)	Push to Start	~
			TXCT	~	~	16 pin	9	Blue	(DATA)	Push to Start	~
			Push to Start	~	~	16 pin	7	Black	(-)	Push to Start	~
			Ignition	B	~	4 pin	4	LtGreen	(+)	Brake switch above brake pedal	~
			12V (Brake)	B	~	4 pin	2	Blue/White	(+)	Brake switch above brake pedal	~
			Brake	B	~	4 pin	1	Red/Black	(+)	Brake switch above brake pedal	~
	IS 350	06-08	Code	~	~	16 pin	10	LtBlue	(DATA)	Push to Start	~
			TXCT	~	~	16 pin	9	Blue	(DATA)	Push to Start	~
			Push to Start	~	~	16 pin	7	Black	(-)	Push to Start	~
			Ignition	B	~	4 pin	4	LtGreen	(+)	Brake switch above brake pedal	~
			12V (Brake)	B	~	4 pin	2	Blue/White	(+)	Brake switch above brake pedal	~
			Brake	B	~	4 pin	1	Red/Black	(+)	Brake switch above brake pedal	~
	IS-F	08	Code	~	~	16 pin	10	LtBlue	(DATA)	Push to Start	~
			TXCT	~	~	16 pin	9	Blue	(DATA)	Push to Start	~
			Push to Start	~	~	16 pin	7	Black	(-)	Push to Start	~
			Ignition	B	~	4 pin	4	LtGreen	(+)	Brake switch above brake pedal	~
			12V (Brake)	B	~	4 pin	2	Blue/White	(+)	Brake switch above brake pedal	~
			Brake	B	~	4 pin	1	Red/Black	(+)	Brake switch above brake pedal	~
LS 460	07-08	Code	~	~	16 pin	10	White	(DATA)	Push to Start	~	
		TXCT	~	~	16 pin	9	Orange	(DATA)	Push to Start	~	
		Push to Start	~	~	16 pin	7	White	(-)	Push to Start	~	
		Ignition	B	~	4 pin	3	Red	(+)	Brake switch above brake pedal	~	
		12V (Brake)	B	~	4 pin	2	Green	(+)	Brake switch above brake pedal	~	
		Brake	B	~	4 pin	1	Blue	(+)	Brake switch above brake pedal	~	
LS 600 Hybrid	08	Code	~	~	16 pin	10	White	(DATA)	Push to Start	~	
		TXCT	~	~	16 pin	9	Orange	(DATA)	Push to Start	~	
		Push to Start	~	~	16 pin	7	White	(-)	Push to Start	~	
		Ignition	B	~	4 pin	4	LtGreen	(+)	Brake switch above brake pedal	~	
		12V (Brake)	B	~	4 pin	2	Green	(+)	Brake switch above brake pedal	~	
		Brake	B	~	4 pin	1	Red/Black	(+)	Brake switch above brake pedal	~	

TYPE 3 - WIRING DIAGRAM

NOTE: FACTORY KEYFOB WILL NOT FUNCTION WHEN REMOTE STARTER IS ENGAGED. FOR AFTERMARKET KEYFOB FUNCTIONALITY, HARDWIRE REMOTE STARTER DOORLOCKS AND ALARM OUTPUTS.

WARNING
DO NOT CONNECT ANY OTHER ACCESSORY, IGNITION OR START WIRE FROM THE REMOTE STARTER TO THE VEHICLE. THE INTERFACE MODULE IS HANDLING THE REQUIRED VEHICLE POWER AND START SEQUENCE FROM THE PUSH TO START BUTTON CIRCUIT.

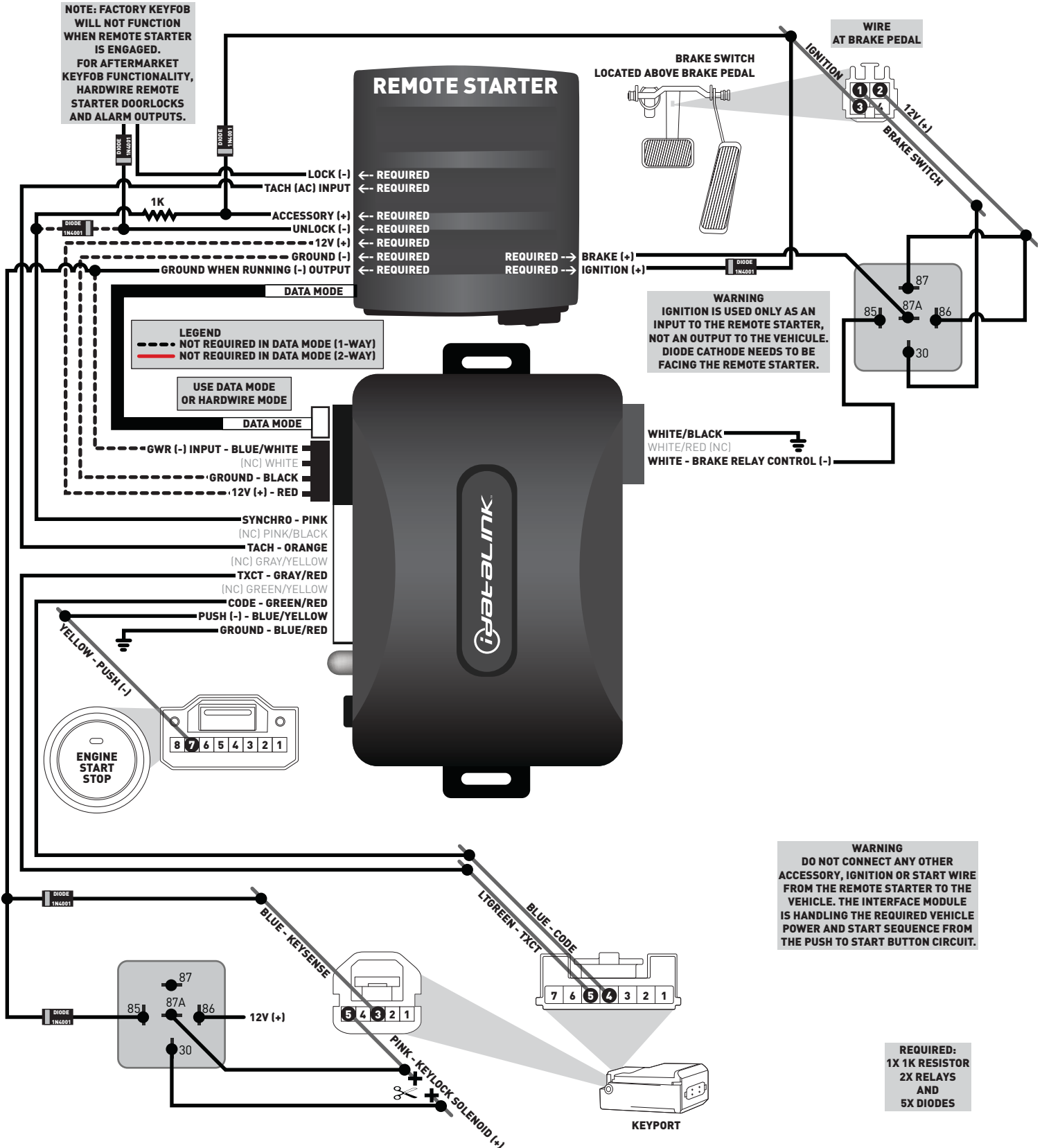
BRAKE SWITCH LOCATED ABOVE BRAKE PEDAL



TYPE 4 - WIRE CROSS REFERENCE CHART

MAKE	MODEL	YEAR	WIRE DESCRIPTION	CONNECTOR			POSITION	WIRE COLOR	POLARITY	MODULE LOCATION	COMPONENT LOCATOR
				NAME	COLOR	TYPE					
TOYOTA	Prius	04-10	Code	~	~	7 pin	4	Blue	(DATA)	At Key Port	~
			TXCT	~	~	7 pin	5	LtGreen	(DATA)	At Key Port	~
			Push to Start	~	~	8 pin	7	Yellow	(-)	At Start Button	~
			Ignition	A	~	4 pin	3	Orange	(+)	Above Brake Pedal	~
			12V (Brake)	A	~	4 pin	2	Black	(+)	Above Brake Pedal	~
			Brake	A	~	4 pin	1	Blue	(+)	Above Brake Pedal	~

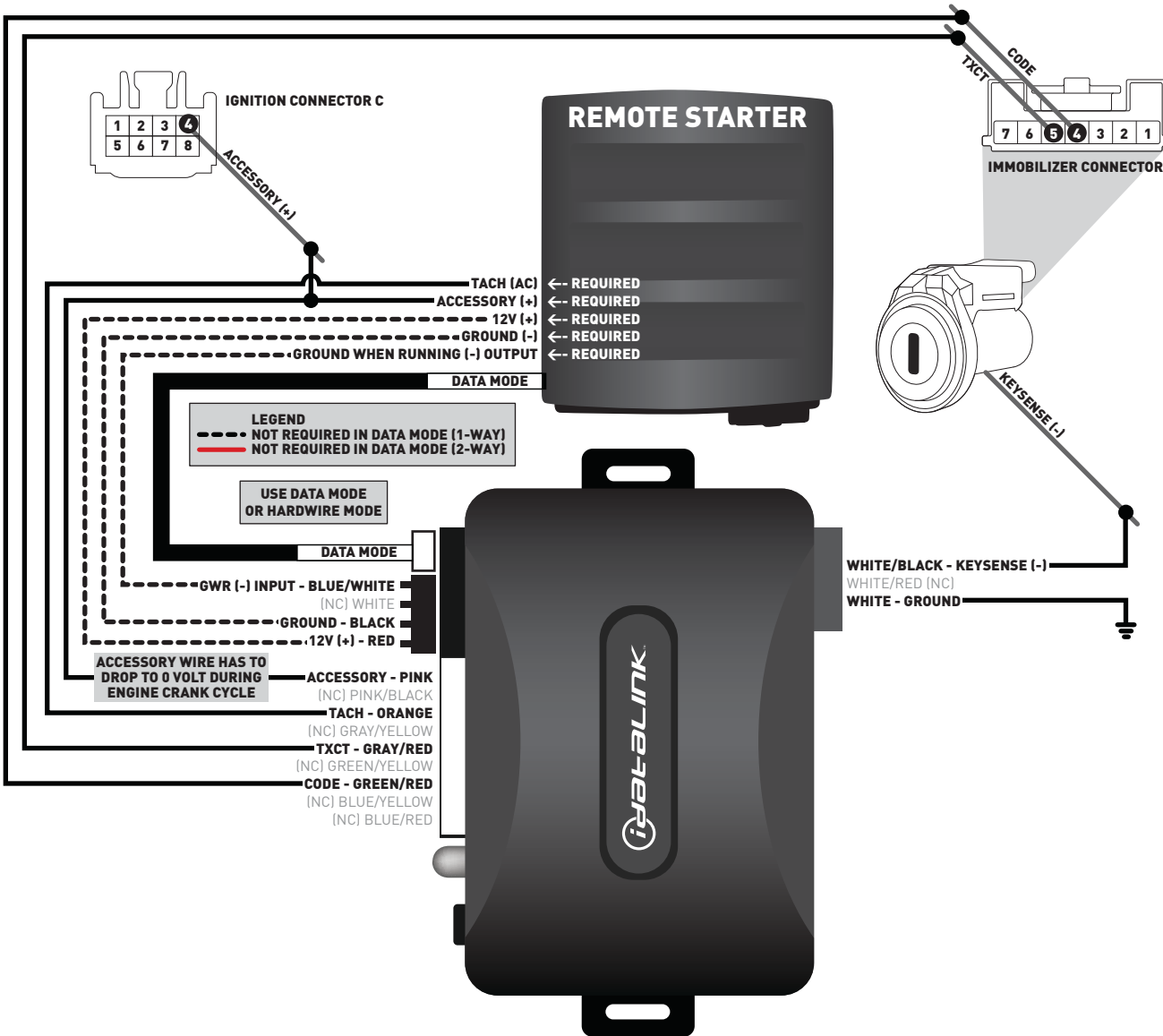
TYPE 4 - WIRING DIAGRAM



TYPE 5 - WIRE CROSS REFERENCE CHART



MAKE	MODEL	YEAR	WIRE DESCRIPTION	CONNECTOR				WIRE COLOR	POLARITY	MODULE LOCATION	COMPONENT LOCATOR
				NAME	COLOR	TYPE	POSITION				
TOYOTA	Highlander Hybrid	06-07	Code	~	~	7 pin	4	Gray	(DATA)	Ignition switch	~
			TXCT	~	~	7 pin	5	LtBlue	(DATA)	Ignition switch	~
			Keysense	~	~	~	~	Green	(-)	Ignition switch	~
			Accessory	C	~	8 pin	4	Green	(+)	Ignition switch	~
LEXUS	RX 400 Hybrid	06-08	Code	~	~	7 pin	4	LtGreen	(DATA)	Ignition switch	~
			TXCT	~	~	7 pin	5	Brown	(DATA)	Ignition switch	~
			Keysense	~	~	~	~	Black	(-)	Ignition switch	~
			Accessory	C	~	8 pin	4	Green	(+)	Ignition switch	~

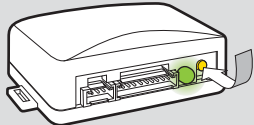
TYPE 5 - WIRING DIAGRAM



INSTALLATION MODE SELECTION

1  Press and release programming button to select installation mode.

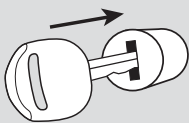
 LED flashes (1X) once = DATA MODE
 LED flashes (2X) twice = STANDARD HARDWARE MODE

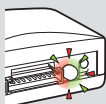
2  Press and hold programming button until LED turns solid GREEN to register selection.

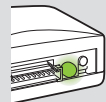


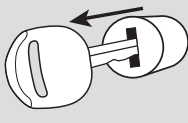
After registration, follow Factory Reset Procedure to change installation mode and restart this procedure.

TYPE 1, 2 & 5 - MODULE PROGRAMMING PROCEDURE - REGULAR KEY

1  Insert key into ignition.
(OR insert key into keyport)

2  LED will flash GREEN and RED.

3  Wait, LED will turn solid GREEN for **2 seconds**.

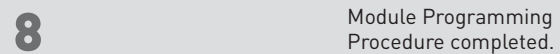
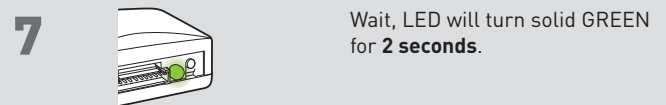
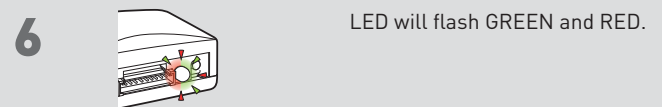
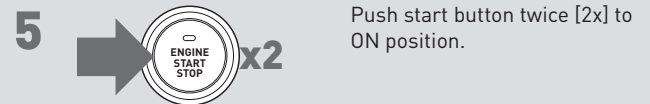
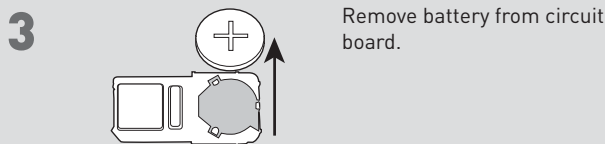
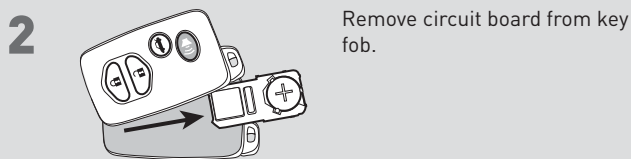
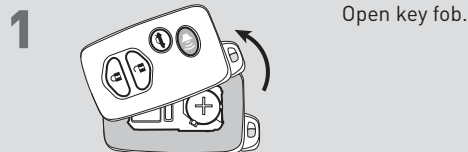
4  Remove key.
(OR remove key from keyport)

5 Module Programming Procedure completed.

TYPE 3 - MODULE PROGRAMMING PROCEDURE - SMARTKEY PUSH TO START

NOTE

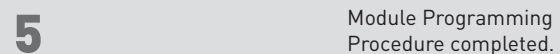
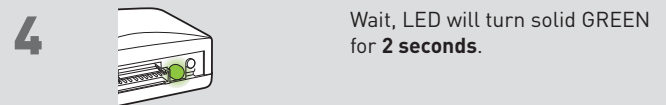
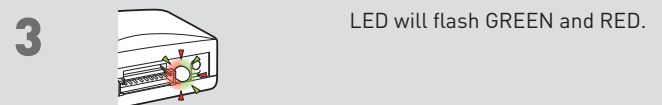
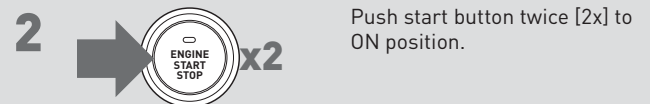
1 When programming, only one key fob will be used. The other one must be located at least 10 feet away from the vehicle.



TYPE 4 - MODULE PROGRAMMING PROCEDURE - NON-RFID PUSH TO START

NOTE

1 When programming, only one key fob will be used. The other one must be located at least 10 feet away from the vehicle.



IDENTIFY VEHICLE YEAR

1 Locate the Vehicle Identification Number (VIN) and identify the 10th character.



2 Match the VIN's 10th character to its corresponding year.

L → 1990	S → 1995	Y → 2000	5 → 2005	A → 2010
M → 1991	T → 1996	1 → 2001	6 → 2006	B → 2011
N → 1992	V → 1997	2 → 2002	7 → 2007	C → 2012
P → 1993	W → 1998	3 → 2003	8 → 2008	D → 2013
R → 1994	X → 1999	4 → 2004	9 → 2009	E → 2014

MODULE DIAGNOSTICS

LED STATUS	DIAGNOSTICS		
	DURING PROGRAMMING	DURING REMOTE START	WITH IGNITION OFF
Flashing RED	Missing/wrong information from firmware or vehicle	Incorrectly programmed	Incorrectly programmed or connected
Solid RED	Waiting for more vehicle information	Incorrectly programmed	Not programmed waiting for more vehicle information
Flashing GREEN	Additional steps required to complete programming	Correctly programmed and operational	False ground when running status from remote starter
Solid GREEN then OFF	Correctly programmed	Reset in progress	Reset in progress
OFF	No activity or already programmed	Invalid ground when running status from remote starter	At rest and ready for a remote start sequence

FACTORY RESET PROCEDURE

1 **DISCONNECT** all connectors from module **EXCEPT** the black 4-PIN standard or optional data connector.

2 **DISCONNECT** black 4-PIN standard or optional data connector.

3 **PRESS AND HOLD** programming button while connecting either 4-PIN standard or optional data connector.

4 When LED flashes red, **RELEASE** programming button.

5 LED will turn solid red for 2 seconds.
RESET COMPLETED.

6 **RECONNECT** all connectors.

7 Repeat programming procedure.

! Failure to follow procedure may result with a DTC or a CHECK ENGINE error message.

PUSH TO START VEHICLE TAKE OVER PROCEDURE - TO THE VEHICLE OWNER

NOTE

- I This procedure is to be followed during remote starter runtime prior to entering vehicle.
- II Do not attempt to remote start the vehicle when the OEM RFID FOB's are in the vehicle.



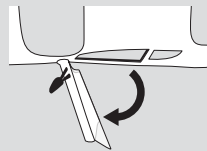
TIME RESTRICTION COMING UP !

1



Press UNLOCK on after-market remote.

2



TIME RESTRICTION

Within 45 SECONDS from previous step:

Open vehicle door.

Enter vehicle.

Close vehicle door.

Press and release BRAKE pedal.



3

Push to Start vehicle take over procedure completed.



Failure to follow procedure within time restriction will result in vehicle engine shutdown.