



Automotive Data Solutions Inc.

# INSTALL GUIDE OL-AL(MIB)-HA-EN

# HA

**AVAILABLE FOR: OL-MDB-ALL**

*Rev. Date: February 26, 2016*

*Doc. No.: ##26884##*

U.S. PATENT NO. 8,856,780

PLEASE VISIT [WWW.OMEGAWEBLINK.COM](http://WWW.OMEGAWEBLINK.COM) FOR COMPLETE PRODUCT DETAILS

The brand names and logos found in this guide are property of their respective owners. Automotive Data Solutions Inc. © 2016

**ACURA**

**HONDA**

**NOTICE:** The manufacturer will accept no responsibility for any electrical damage resulting from improper installation of this product, be that either damage to the vehicle itself or to the installed device. This device must be installed by a certified technician. This guide has been written for properly trained technicians; a certain level of skill & knowledge is therefore assumed. Please review the Installation Guide carefully before beginning any work.

### TABLE OF CONTENTS - READ ENTIRE VEHICLE SECTION

MAKE	MODEL	YEAR	SECTION	FEATURES	
				DATA	IMMOBILIZER BYPASS
ACURA	CL STD key AT/MT	97-03	A	•	
	CSX STD key AT/MT	06-11	B	•	
	EL 1.7 STD key AT/MT	01-05	A	•	
	Integra STD key AT/MT	00-01	A	•	
	MDX STD key AT	01-02	A	•	
	MDX STD key AT	03-06	A	•	
	MDX STD key AT	07-13	B	•	
	RDX STD key AT	07-13	B	•	
	RSX STD key AT/MT	01-06	A	•	
	TL STD key AT/MT	98-03	A	•	
	TL STD key AT/MT	04-08	A	•	
	TL STD key w/o Keyless Access AT/MT	09-13	B	•	
	TSX STD key AT/MT	04-08	A	•	
	TSX STD key AT/MT	09-14	B	•	
HONDA	Accord STD key AT/MT	98-02	A	•	
	Accord STD key AT/MT	03-07	A	•	
	Accord STD key AT/MT	08-12	B	•	
	Accord Hybrid STD key AT	05-07	A	•	
	Civic STD key AT/MT	01-05	A	•	
	Civic STD key AT/MT	06-15	B	•	
	Civic Hybrid STD key AT	03-05	A	•	
	Civic Hybrid STD key AT	06-13	B	•	
	CR-V STD key AT/MT	02-06	A	•	
	CR-V STD key AT/MT	07-16	B	•	
	CR-Z STD key AT	11-14	B	•	
	Element STD key AT/MT	03-11	A	•	
	Fit STD key AT/MT	07-08	A	•	
	Fit STD key AT/MT	09-13	B	•	
	Insight STD key AT	00-06	A	•	
	Insight STD key AT	10-14	B	•	
	Odyssey STD key AT	98-04	A	•	
	Odyssey STD key AT	05-10	A	•	
	Odyssey STD key AT	11-16	B	•	
	Pilot STD key AT	03-04	A	•	
	Pilot STD key AT	05-08	A	•	
	Pilot STD key AT	09-15	B	•	
	S-2000 STD key MT	00-05	A	•	
S-2000 STD key MT	06-10	A	•		
Ridgeline STD key AT	06-14	A	•		

**NOTE**

I WARNING: This solution does NOT cover hybrid vehicles with a manual transmission. Do not, under any circumstances, attempt to install.

### INSTALL TYPE SELECTION

MAKE	MODEL	YEAR	INSTALL TYPE	FEATURES	
				DATA	IMMOBILIZER BYPASS
ACURA	CL STD key AT/MT	97-03	1	•	
	EL 1.7 STD key AT/MT	01-05	2	•	
	Integra STD key AT/MT	00-01	1	•	
	MDX STD key AT	01-02	1	•	
	MDX STD key AT	03-06	2	•	
	RSX STD key AT/MT	01-06	2	•	
	TL STD key AT/MT	98-03	1	•	
	TL STD key AT/MT	04-08	2	•	
	TSX STD key AT/MT	04-08	2	•	
HONDA	Accord STD key AT/MT	98-02	1	•	
	Accord STD key AT/MT	03-07	2	•	
	Accord Hybrid STD key AT	05-07	2	•	
	Civic STD key AT/MT	01-05	2	•	
	Civic Hybrid STD key AT	03-05	2	•	
	CR-V STD key AT/MT	02-06	2	•	
	Element STD key AT/MT	03-11	2	•	
	Fit STD key AT/MT	07-08	2	•	
	Insight STD key AT	00-06	1	•	
	Odyssey STD key AT	98-04	1	•	
	Odyssey STD key AT	05-10	2	•	
	Pilot STD key AT	03-04	1	•	
	Pilot STD key AT	05-08	2	•	
	S-2000 STD key MT	00-05	1	•	
	S-2000 STD key MT	06-10	2	•	
	Ridgeline STD key AT	06-14	2	•	

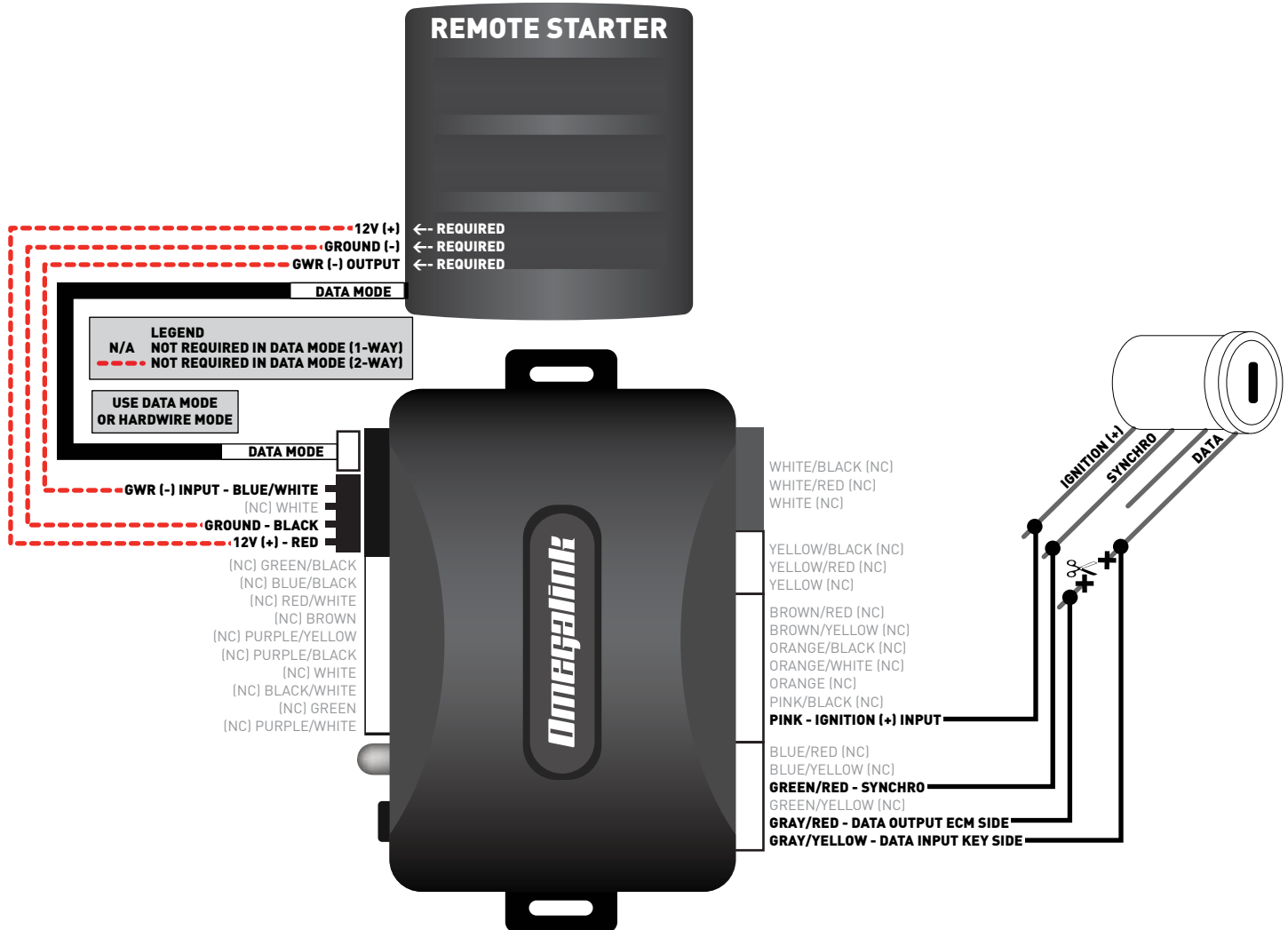
**NOTE**

I WARNING: This solution does NOT cover hybrid vehicles with a manual transmission. Do not, under any circumstances, attempt to install.

### TYPE 1 - WIRE CROSS REFERENCE CHART

MAKE	MODEL	YEAR	WIRE DESCRIPTION	CONNECTOR NAME	CONNECTOR COLOR	CONNECTOR TYPE	POSITION	WIRE COLOR	POLARITY	MODULE LOCATION	COMPONENT LOCATOR
ACURA	CL STD key AT/MT	97-99	Data	~	Green	5 pin	2	Blue/Green	(DATA)	Ignition switch	~
			Synchro	~	Green	5 pin	3	Orange/Blue	(DATA)	Ignition switch	~
	CL STD key AT/MT	00-03	Data	~	Green	5 pin	2	Red	(DATA)	Ignition switch	~
			Synchro	~	Green	5 pin	3	Blue/White	(DATA)	Ignition switch	~
	Integra STD key AT/MT	00-01	Data	~	Green	5 pin	2	Red	(DATA)	Ignition switch	~
			Synchro	~	Green	5 pin	3	Blue	(DATA)	Ignition switch	~
	MDX STD key AT	01-02	Data	~	Green	5 pin	2	Red	(DATA)	Ignition switch	~
			Synchro	~	Green	5 pin	3	Blue	(DATA)	Ignition switch	~
	TL STD key AT/MT	98-03	Data	~	Green	5 pin	2	Red	(DATA)	Ignition switch	~
			Synchro	~	Green	5 pin	3	Blue	(DATA)	Ignition switch	~
HONDA	Accord STD key AT/MT	98-02	Data	~	Green	5 pin	2	Red	(DATA)	Ignition switch	~
			Synchro	~	Green	5 pin	3	Blue	(DATA)	Ignition switch	~
	Insight STD key AT	00-06	Data	~	Green	5 pin	2	Red	(DATA)	Ignition switch	~
			Synchro	~	Green	5 pin	3	Blue/Yellow	(DATA)	Ignition switch	~
	Odyssey STD key AT	98	Data	~	Green	5 pin	2	Red	(DATA)	Ignition switch	~
			Synchro	~	Green	5 pin	3	Blue	(DATA)	Ignition switch	~
	Odyssey STD key AT	99-04	Data	~	Green	5 pin	2	Blue/Green	(DATA)	Ignition switch	~
			Synchro	~	Green	5 pin	3	Orange/ Blue	(DATA)	Ignition switch	~
	Pilot STD key AT	03-04	Data	~	Green	5 pin	2	Red	(DATA)	Ignition switch	~
			Synchro	~	Green	5 pin	3	Blue	(DATA)	Ignition switch	~
	S2000 STD key MT	00-05	Data	~	Green	5 pin	2	Red/Blue	(DATA)	Ignition switch	~
			Synchro	~	Green	5 pin	3	Pink/Blue	(DATA)	Ignition switch	~

### TYPE 1 - WIRING DIAGRAM



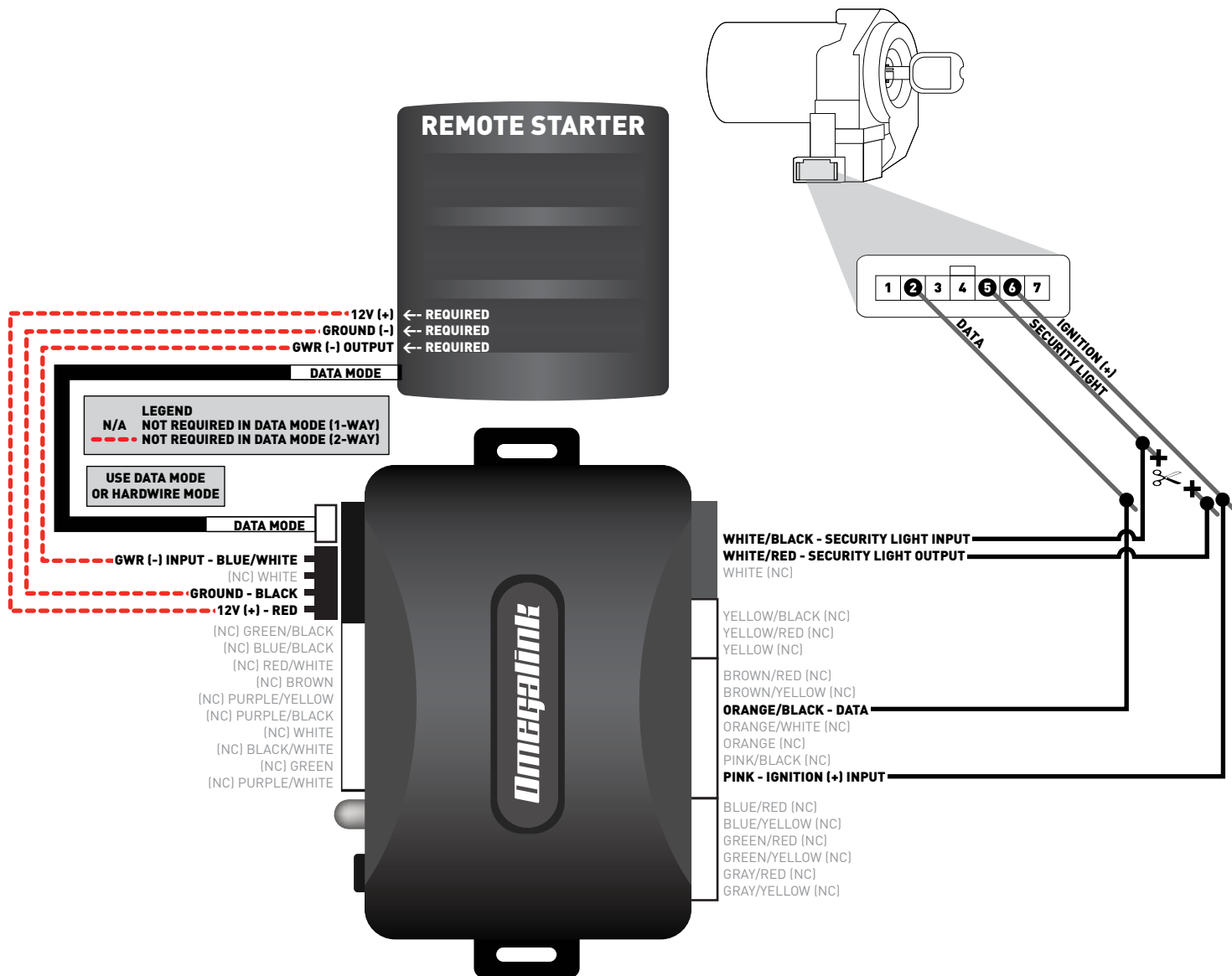
### TYPE 2 - WIRE CROSS REFERENCE CHART - 1 OF 2

MAKE	MODEL	YEAR	WIRE DESCRIPTION	CONNECTOR NAME	CONNECTOR COLOR	CONNECTOR TYPE	POSITION	WIRE COLOR	POLARITY	MODULE LOCATION	COMPONENT LOCATOR
ACURA	EL 1.7 STD key AT/MT	01-05	Ignition	~	~	7 pin	6	Yellow/Black	(+)	Ignition switch	~
			Data	~	~	7 pin	2	Red/Blue	(DATA)	Ignition switch	~
			Security Led	~	~	7 pin	5	Blue/Orange	~	Ignition switch	~
	MDX STD key AT	03-06	Ignition	~	~	7 pin	6	Green/White	(+)	Ignition switch	~
			Data	~	~	7 pin	2	Red	(DATA)	Ignition switch	~
			Security Led	~	~	7 pin	5	Blue/Orange	~	Ignition switch	~
	RSX STD key AT/MT	02-04	Ignition	~	~	7 pin	6	Yellow/Black	(+)	Ignition switch	~
			Data	~	~	7 pin	2	Red/Blue	(DATA)	Ignition switch	~
			Security Led	~	~	7 pin	5	Blue/Orange	~	Ignition switch	~
	RSX STD key AT/MT	05-06	Ignition	~	~	7 pin	6	Black/Yellow	(+)	Ignition switch	~
			Data	~	~	7 pin	2	Red/Blue	(DATA)	Ignition switch	~
			Security Led	~	~	7 pin	5	Blue/Orange	~	Ignition switch	~
	TL STD key AT/MT	04-06	Ignition	~	~	7 pin	6	Black/Green	(+)	Ignition switch	~
			Data	~	~	7 pin	2	Red/Blue	(DATA)	Ignition switch	~
			Security Led	~	~	7 pin	5	Blue/Orange	~	Ignition switch	~
	TL STD key AT/MT	07-08	Ignition	~	~	7 pin	6	Black/Green	(+)	Ignition switch	~
			Data	~	~	7 pin	2	Yellow	(DATA)	Ignition switch	~
			Security Led	~	~	7 pin	5	Orange	~	Ignition switch	~
	TSX STD key AT/MT	04-05	Ignition	~	~	7 pin	6	Black/Yellow	(+)	Ignition switch	~
			Data	~	~	7 pin	2	Red/Blue	(DATA)	Ignition switch	~
			Security Led	~	~	7 pin	5	Blue/Orange	~	Ignition switch	~
	TSX STD key AT/MT	06-08	Ignition	~	~	7 pin	6	Black/Yellow	(+)	Ignition switch	~
			Data	~	~	7 pin	2	Red/Blue	(DATA)	Ignition switch	~
			Security Led	~	~	7 pin	5	Blue/Orange	~	Ignition switch	~
HONDA	Accord STD key AT/MT	03-07	Ignition	~	~	7 pin	6	Black/Yellow	(+)	Ignition switch	~
			Data	~	~	7 pin	2	Red/Blue	(DATA)	Ignition switch	~
			Security Led	~	~	7 pin	5	Blue/Orange	~	Ignition switch	~
	Accord Hybrid STD key AT	05	Ignition	~	~	7 pin	6	Black/Yellow	(+)	Ignition switch	~
			Data	~	~	7 pin	2	Yellow	(DATA)	Ignition switch	~
			Security Led	~	~	7 pin	5	Red	~	Ignition switch	~
	Accord Hybrid STD key AT	06-07	Ignition	~	~	7 pin	6	Black/Yellow	(+)	Ignition switch	~
			Data	~	~	7 pin	2	Yellow	(DATA)	Ignition switch	~
			Security Led	~	~	7 pin	5	Red	~	Ignition switch	~
	Civic STD key AT/MT	01-05	Ignition	~	~	7 pin	6	Yellow/Black	(+)	Ignition switch	~
			Data	~	~	7 pin	2	Red/Blue	(DATA)	Ignition switch	~
			Security Led	~	~	7 pin	5	Blue/Orange	~	Ignition switch	~
	Civic Hybrid STD key AT	03-05	Ignition	~	~	7 pin	6	Yellow/Black	(+)	Ignition switch	~
			Data	~	~	7 pin	2	Red/Blue	(DATA)	Ignition switch	~
			Security Led	~	~	7 pin	5	Blue/Orange	~	Ignition switch	~

### TYPE 2 - WIRE CROSS REFERENCE CHART - 2 OF 2

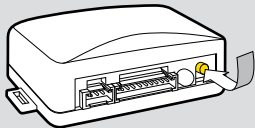
MAKE	MODEL	YEAR	WIRE DESCRIPTION	CONNECTOR NAME	CONNECTOR COLOR	CONNECTOR TYPE	POSITION	WIRE COLOR	POLARITY	MODULE LOCATION	COMPONENT LOCATOR
HONDA	CR-V STD key AT/MT	02-04	Ignition	~	~	7 pin	6	Yellow/Black	(+)	Ignition switch	~
			Data	~	~	7 pin	2	White	(DATA)	Ignition switch	~
			Security Led	~	~	7 pin	5	Blue/Orange	~	Ignition switch	~
	CR-V STD key AT/MT	05-06	Ignition	~	~	7 pin	6	Black/Yellow	(+)	Ignition switch	~
			Data	~	~	7 pin	2	White	(DATA)	Ignition switch	~
			Security Led	~	~	7 pin	5	Blue/Orange	~	Ignition switch	~
	Element STD key AT/MT	03-11	Ignition	~	~	7 pin	6	Black/Yellow	(+)	Ignition switch	~
			Data	~	~	7 pin	2	White	(DATA)	Ignition switch	~
			Security Led	~	~	7 pin	5	Blue/Orange	~	Ignition switch	~
	Fit STD key AT/MT	07-08	Ignition	~	~	7 pin	6	Black/Yellow	(+)	Ignition switch	~
			Data	~	~	7 pin	2	LtGreen/Black	(DATA)	Ignition switch	~
			Security Led	~	~	7 pin	5	Red/Black	~	Ignition switch	~
	Odyssey STD key AT	05-10	Ignition	~	~	7 pin	6	Black/Yellow	(+)	Ignition switch	~
			Data	~	~	7 pin	2	Red/Blue	(DATA)	Ignition switch	~
			Security Led	~	~	7 pin	5	Blue/Orange	~	Ignition switch	~
	Pilot STD key AT	05	Ignition	~	~	7 pin	6	Red/White	(+)	Ignition switch	~
			Data	~	~	7 pin	2	Red/Green	(DATA)	Ignition switch	~
			Security Led	~	~	7 pin	5	Pink	~	Ignition switch	~
	Pilot STD key AT	06-08	Ignition	~	~	7 pin	6	Red/White	(+)	Ignition switch	~
			Data	~	~	7 pin	2	Red/Green	(DATA)	Ignition switch	~
			Security Led	~	~	7 pin	5	White/Blue	~	Ignition switch	~
S-2000 STD key MT	06-10	Ignition	~	~	7 pin	6	Black/Yellow	(+)	Ignition switch	~	
		Data	~	~	7 pin	2	Red/Blue	(DATA)	Ignition switch	~	
		Security Led	~	~	7 pin	5	Pink	~	Ignition switch	~	
Ridgeline STD key AT	06-14	Ignition	~	~	7 pin	6	Black/Green	(+)	Ignition switch	~	
		Data	~	~	7 pin	2	Red/Blue	(DATA)	Ignition switch	~	
		Security Led	~	~	7 pin	5	Blue/Orange	~	Ignition switch	~	



### TYPE 2 - WIRING DIAGRAM

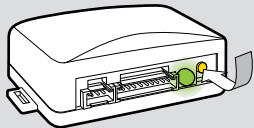




### INSTALLATION MODE SELECTION

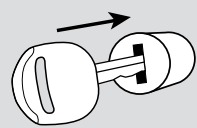
**1**  Press and release programming button to select installation mode.

 LED flashes (1X) once = DATA MODE  
 LED flashes (2X) twice = STANDARD HARDWIRE MODE

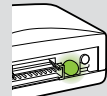
**2**  Press and hold programming button until LED turns solid GREEN to register selection.

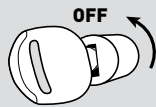
**!** After registration, follow Factory Reset Procedure to change installation mode and restart this procedure.

### MODULE PROGRAMMING PROCEDURE

**1**  Insert key into ignition.

**2**  Turn key to ON position.

**3**  Wait, LED will turn solid GREEN for **2 seconds**.

**4**  Turn key to OFF position.

**5** Module Programming Procedure completed.

### INSTALL TYPE SELECTION

MAKE	MODEL	YEAR	INSTALL TYPE	FEATURES	
				DATA	IMMOBILIZER BYPASS
ACURA	CSX STD key AT/MT	06-11	1	•	
	MDX STD key AT	07-13	1	•	
	RDX STD key AT	07-13	1	•	
	TL STD key w/o Keyless Access AT/MT	09-13	2	•	
	TSX STD key AT/MT	09-14	2	•	
HONDA	Accord STD key AT/MT	08-12	2	•	
	Civic STD key AT/MT	06-11	1	•	
	Civic STD key AT/MT	12-13	2	•	
	Civic STD key without OEM Alarm AT/MT	14-15	2	•	
	Civic STD key with OEM Alarm AT/MT	14-15	3	•	
	Civic Hybrid STD key AT	06-11	1	•	
	Civic Hybrid STD key AT	12-13	2	•	
	CR-V STD key AT/MT	07-11	1	•	
	CR-V STD key AT/MT	12-16	2	•	
	CR-Z STD key AT	11-14	1	•	
	Fit STD key AT/MT	09-13	1	•	
	Insight STD key AT	10-14	1	•	
	Odyssey STD key AT	11-16	2	•	
	Pilot STD key AT	09-15	2	•	

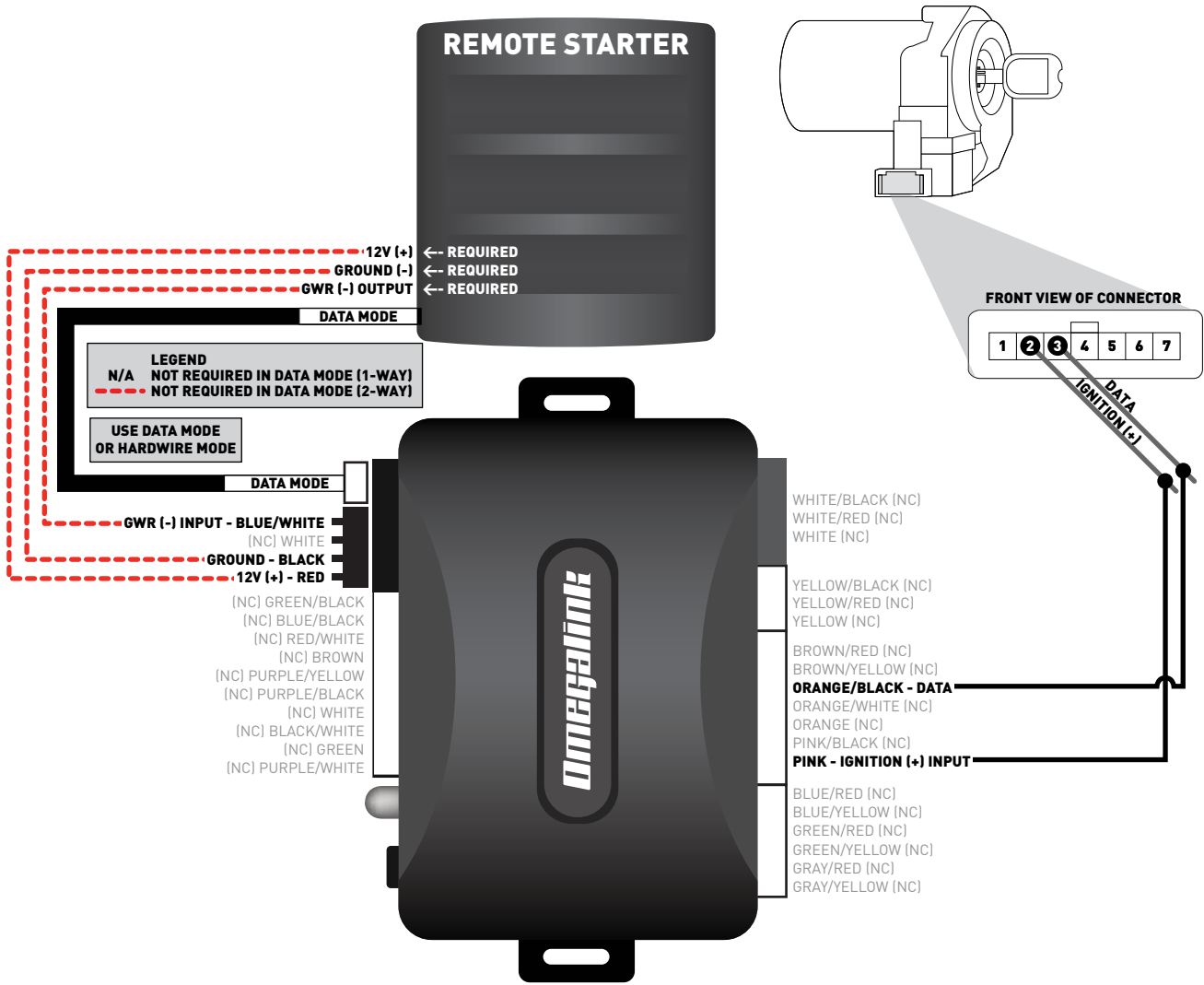
**NOTE**

I WARNING: This solution does NOT cover hybrid vehicles with a manual transmission. Do not, under any circumstances, attempt to install.

### TYPE 1 - WIRE CROSS REFERENCE CHART

MAKE	MODEL	YEAR	WIRE DESCRIPTION	CONNECTOR NAME	CONNECTOR COLOR	CONNECTOR TYPE	POSITION	WIRE COLOR	POLARITY	MODULE LOCATION	COMPONENT LOCATOR
ACURA	CSX STD key AT/MT	06-11	Ignition	~	~	7 pin	2	Yellow	(+)	Ignition switch	~
			Data	~	~	7 pin	3	LtGreen	(DATA)	Ignition switch	~
	MDX STD key AT	07-13	Ignition	~	~	7 pin	2	Brown	(+)	Ignition switch	~
			Data	~	~	7 pin	3	LtGreen	(DATA)	Ignition switch	~
	RDX STD key AT	07-13	Ignition	~	~	7 pin	2	Yellow	(+)	Ignition switch	~
			Data	~	~	7 pin	3	LtGreen	(DATA)	Ignition switch	~
HONDA	Civic STD key AT/MT	06-11	Ignition	~	~	7 pin	2	Yellow	(+)	Ignition switch	~
			Data	~	~	7 pin	3	LtGreen	(DATA)	Ignition switch	~
	Civic Hybrid STD key AT	06-11	Ignition	~	~	7 pin	2	Yellow	(+)	Ignition switch	~
			Data	~	~	7 pin	3	LtGreen	(DATA)	Ignition switch	~
	CR-V STD key AT/MT	07-11	Ignition	~	~	7 pin	2	Blue	(+)	Ignition switch	~
			Data	~	~	7 pin	3	LtGreen	(DATA)	Ignition switch	~
	CR-Z STD key AT	11-14	Ignition	~	~	7 pin	2	Yellow	(+)	Ignition switch	~
			Data	~	~	7 pin	3	Pink	(DATA)	Ignition switch	~
	Fit STD key AT/MT	09-13	Ignition	~	~	7 pin	2	Red	(+)	Ignition switch	~
			Data	~	~	7 pin	3	Green	(DATA)	Ignition switch	~
	Insight STD key AT	10-14	Ignition	~	~	7 pin	2	Red	(+)	Ignition switch	~
			Data	~	~	7 pin	3	LtGreen	(DATA)	Ignition switch	~

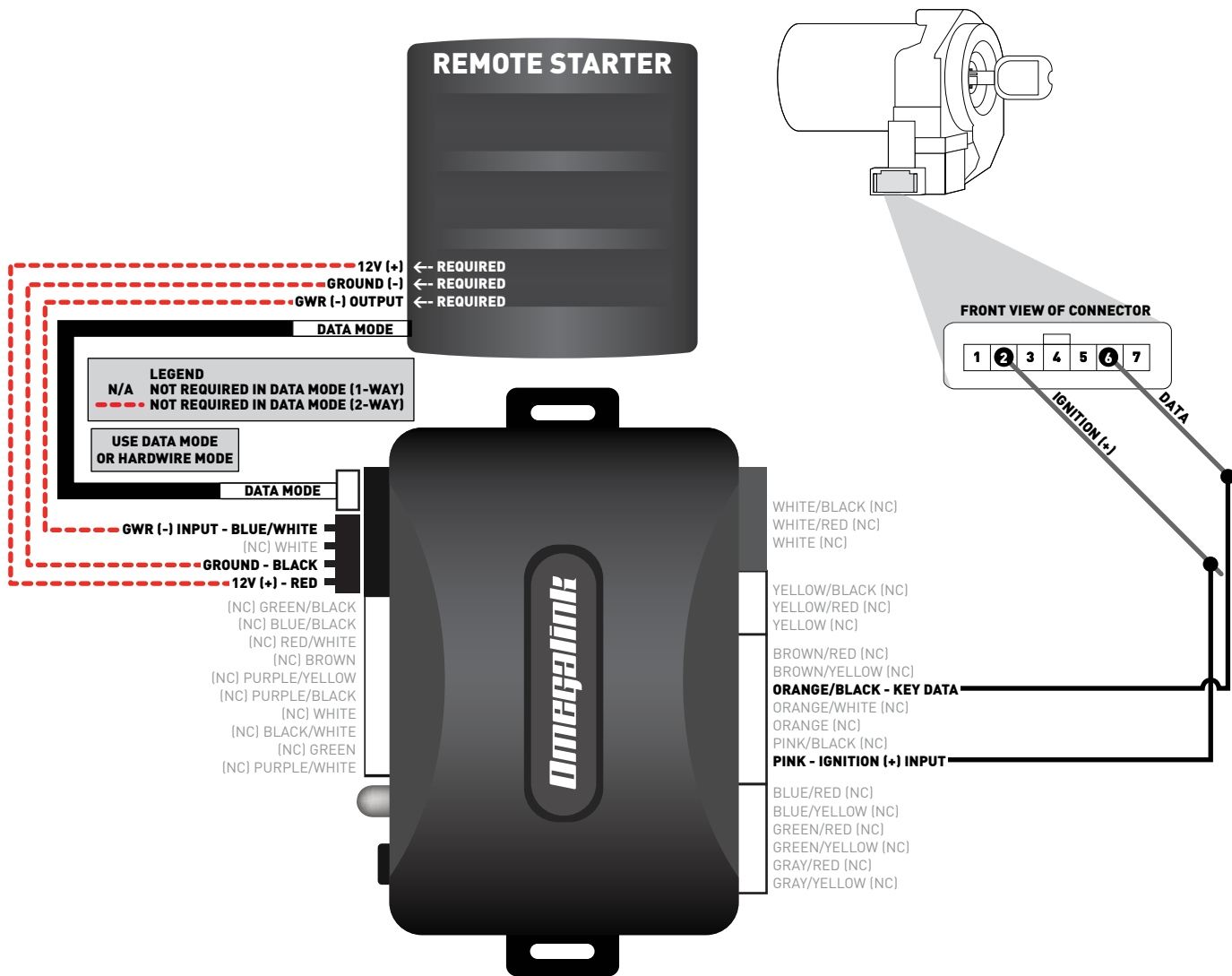
### TYPE 1 - WIRING DIAGRAM



### TYPE 2 - WIRE CROSS REFERENCE CHART

MAKE	MODEL	YEAR	WIRE DESCRIPTION	CONNECTOR NAME	CONNECTOR COLOR	CONNECTOR TYPE	POSITION	WIRE COLOR	POLARITY	MODULE LOCATION	COMPONENT LOCATOR
ACURA	TL STD key w/o Keyless Access AT/MT	09-13	Ignition	~	White	7 pin	2	Yellow	(+)	Ignition switch	~
			Key Data	~	White	7 pin	6	LtGreen	(DATA)	Ignition switch	~
	TSX STD key AT/MT	09-14	Ignition	~	White	7 pin	2	Yellow	(+)	Ignition switch	~
			Key Data	~	White	7 pin	6	LtGreen	(DATA)	Ignition switch	~
HONDA	Accord STD key AT/MT	08-12	Ignition	~	White	7 pin	2	Yellow	(+)	Ignition switch	~
			Key Data	~	White	7 pin	6	LtGreen	(DATA)	Ignition switch	~
	Civic STD key AT/MT	12-13	Ignition	~	Black	7 pin	2	Yellow	(+)	Ignition switch	~
			Key Data	~	Black	7 pin	6	LtGreen	(DATA)	Ignition switch	~
	Civic STD key AT/MT without OEM Alarm	14-15	Ignition	~	Black	7 pin	2	Yellow	(+)	Ignition switch	~
			Key Data	~	Black	7 pin	6	LtGreen	(DATA)	Ignition switch	~
	Civic Hybrid STD key AT	12-13	Ignition	~	Black	7 pin	2	Yellow	(+)	Ignition switch	~
			Key Data	~	Black	7 pin	6	LtGreen	(DATA)	Ignition switch	~
	CR-V STD key AT/MT	12-16	Ignition	~	Black	7 pin	2	DkBlue	(+)	Ignition switch	~
			Key Data	~	Black	7 pin	6	Yellow	(DATA)	Ignition switch	~
	Odyssey STD key AT	11-16	Ignition	~	White	7 pin	2	Yellow	(+)	Ignition switch	~
			Key Data	~	White	7 pin	6	Purple	(DATA)	Ignition switch	~
Pilot STD key AT	09-15	Ignition	~	White	7 pin	2	Brown	(+)	Ignition switch	~	
		Key Data	~	White	7 pin	6	Pink	(DATA)	Ignition switch	~	

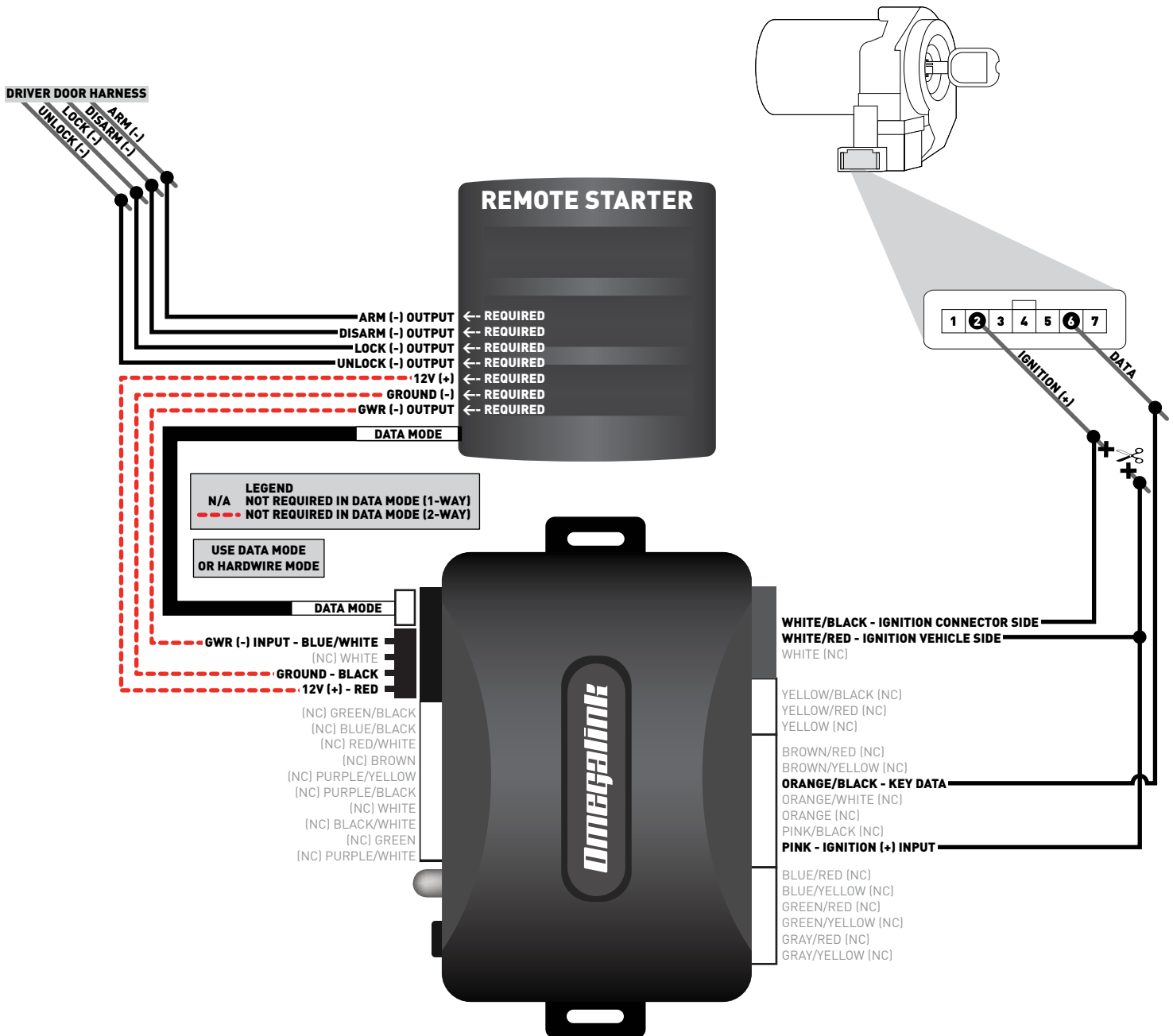
### TYPE 2 - WIRING DIAGRAM



### TYPE 3 - WIRE CROSS REFERENCE CHART

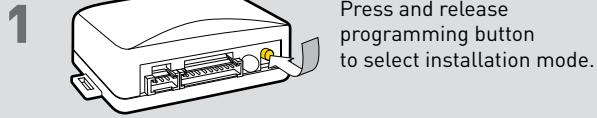
MAKE	MODEL	YEAR	WIRE DESCRIPTION	CONNECTOR NAME	CONNECTOR COLOR	CONNECTOR TYPE	POSITION	WIRE COLOR	POLARITY	MODULE LOCATION	COMPONENT LOCATOR
HONDA	Civic STD key AT/MT with OEM alarm	14-15	Ignition	~	Gray	7 pin	02	Yellow	(+)	Ignition switch	~
			Key Data	~	Gray	7 pin	06	LtGreen	(DATA)	Ignition switch	~
			Lock	~	~	~	~	Blue	(-)	Driver door harness	~
			Unlock	~	~	~	~	Gray	(-)	Driver door harness	~
			Arm	~	~	~	~	Pink	(-)	Driver door harness	~
			Disarm	~	~	~	~	Brown	(-)	Driver door harness	~



## TYPE 3 - WIRING DIAGRAM

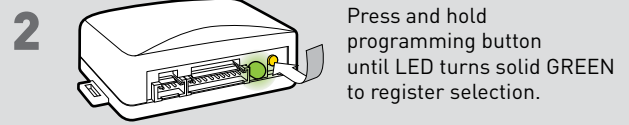





### INSTALLATION MODE SELECTION

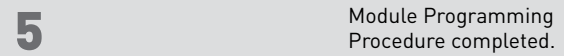
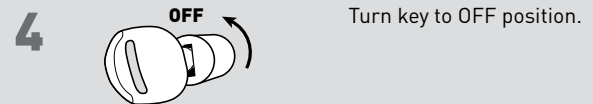
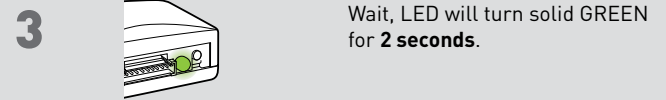
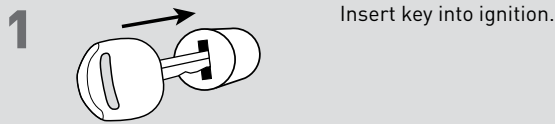


 LED flashes (1X) once = DATA MODE  
 LED flashes (2X) twice = STANDARD HARDWARE MODE



 After registration, follow Factory Reset Procedure to change installation mode and restart this procedure.

### MODULE PROGRAMMING PROCEDURE



### IDENTIFY VEHICLE YEAR

**1** Locate the Vehicle Identification Number (VIN), identify the 10th character then match it to its corresponding year.



A	1980	L	1990	Y	2000	A	2010
B	1981	M	1991	1	2001	B	2011
C	1982	N	1992	2	2002	C	2012
D	1983	P	1993	3	2003	D	2013
E	1984	R	1994	4	2004	E	2014
F	1985	S	1995	5	2005	F	2015
G	1986	T	1996	6	2006	G	2016
H	1987	V	1997	7	2007	H	2017
J	1988	W	1998	8	2008	J	2018
K	1989	X	1999	9	2009	K	2019

### MODULE DIAGNOSTICS

LED STATUS	DIAGNOSTICS		
	DURING PROGRAMMING	DURING REMOTE START	WITH IGNITION OFF
Flashing RED	Missing/wrong information from firmware or vehicle	Incorrectly programmed	Incorrectly programmed or connected
Solid RED	Waiting for more vehicle information	Incorrectly programmed	Not programmed waiting for more vehicle information
Flashing GREEN	Additional steps required to complete programming	Correctly programmed and operational	False ground when running status from remote starter
Solid GREEN then OFF	Correctly programmed	Reset in progress	Reset in progress
OFF	No activity or already programmed	Invalid ground when running status from remote starter	At rest and ready for a remote start sequence

### FACTORY RESET PROCEDURE

- DISCONNECT** all connectors from module **EXCEPT** the black 4-PIN standard or optional data connector.
- DISCONNECT** black 4-PIN standard or optional data connector.
- PRESS AND HOLD** programming button while connecting either 4-PIN standard or optional data connector.
- When LED flashes red, **RELEASE** programming button.

- LED will turn solid red for 2 seconds.  
**RESET COMPLETED.**
  - RECONNECT** all connectors.
  - Repeat programming procedure.
- !** Failure to follow procedure may result with a DTC or a CHECK ENGINE error message.