

Automotive Data Solutions Inc.

INSTALL GUIDE ADS-AL(DL)-VO

VO

AVAILABLE FOR: ADS-AL CA

Rev. Date: January 30, 2012

Doc. No.: ##8091##

20120130

VERSION FRANÇAISE DISPONIBLE EN LIGNE AU WWW.IDATALINK.COM

PLEASE VISIT WWW.IDATALINK.COM/SUPPORT FOR COMPLETE PRODUCT DETAILS

The brand names and logos found in this guide are property of their respective owners. Automotive Data Solutions Inc. © 2011

VOLVO

NOTICE: The manufacturer will accept no responsibility for any electrical damage resulting from improper installation of this product, be that either damage to the vehicle itself or to the installed device. This device must be installed by a certified technician. This guide has been written for properly trained technicians; a certain level of skill & knowledge is therefore assumed. Please review the Installation Guide carefully before beginning any work.

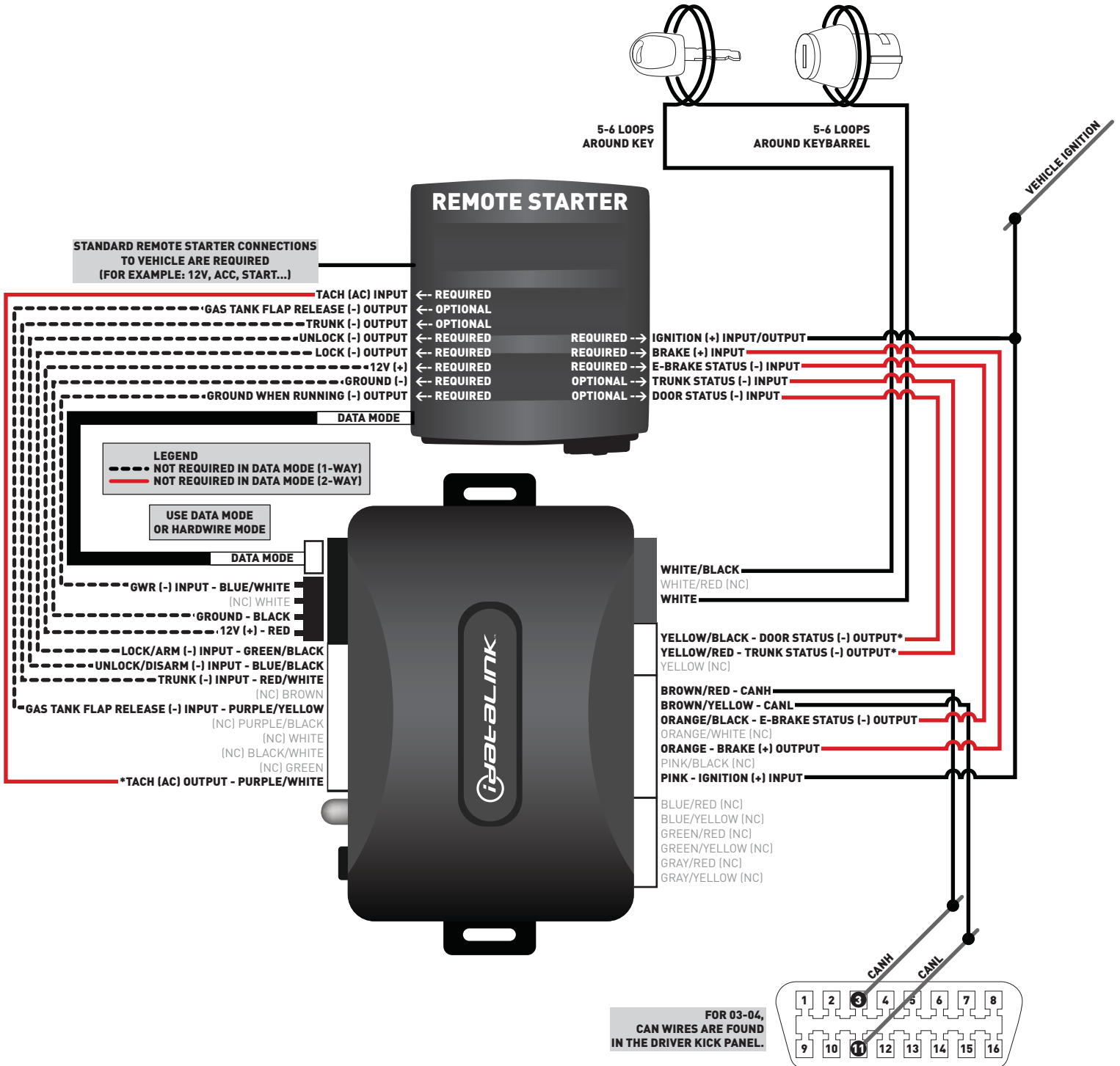
INSTALL TYPE SELECTION

MAKE	MODEL	YEAR	INSTALL TYPE	FEATURES												
				ARM OEM ALARM	DISARM OEM ALARM	DOOR LOCK	DOOR UNLOCK	TRUNK/HATCH RELEASE	GAS TANK FLAP RELEASE	DOOR STAT OUTPUT	TRUNK STAT OUTPUT	HOOD STAT OUTPUT	BRAKE PEDAL STAT OUTPUT	E-BRAKE OUTPUT	TACHOMETER OUTPUT	
VOLVO	C30	07-11	2		•	•	•	•	•		•	•	•	•	•	•
	C70	06-11	2		•	•	•	•	•		•	•	•	•	•	•
	S40	05-11	2		•	•	•	•	•		•	•	•	•	•	•
	S60	03-10	1	•	•	•	•	•	•	•	•	•	•	•	•	•
	S80	04-06	1	•	•	•	•	•	•	•	•	•	•	•	•	•
	V50	05-11	2		•	•	•	•	•		•	•	•	•	•	•
	V70 regular key	04-08	1	•	•	•	•	•	•	•	•	•	•	•	•	•
	XC70 regular key	04-08	1	•	•	•	•	•	•	•	•	•	•	•	•	•
	XC90	03-11	1		•	•	•	•	•	•	•	•	•	•	•	•

TYPE 1 - WIRE CROSS REFERENCE CHART

MAKE	MODEL	YEAR	WIRE DESCRIPTION	CONNECTOR			POSITION	WIRE COLOR	POLARITY	MODULE LOCATION	COMPONENT LOCATOR
				NAME	COLOR	TYPE					
VOLVO	S60	03-10	CanH	~	~	16 pin	3	White	(DATA)	OBDII	~
			CanL	~	~	16 pin	11	Green	(DATA)	OBDII	~
	S80	04-06	CanH	~	~	16 pin	3	White	(DATA)	OBDII	~
			CanL	~	~	16 pin	11	Green	(DATA)	OBDII	~
	V70	04-08	CanH	~	~	16 pin	3	White	(DATA)	OBDII	~
			CanL	~	~	16 pin	11	Green	(DATA)	OBDII	~
	XC70	04-08	CanH	~	~	16 pin	3	White	(DATA)	OBDII	~
			CanL	~	~	16 pin	11	Green	(DATA)	OBDII	~
	XC90	03-11	CanH	~	~	16 pin	3	White	(DATA)	OBDII	~
			CanL	~	~	16 pin	11	Green	(DATA)	OBDII	~

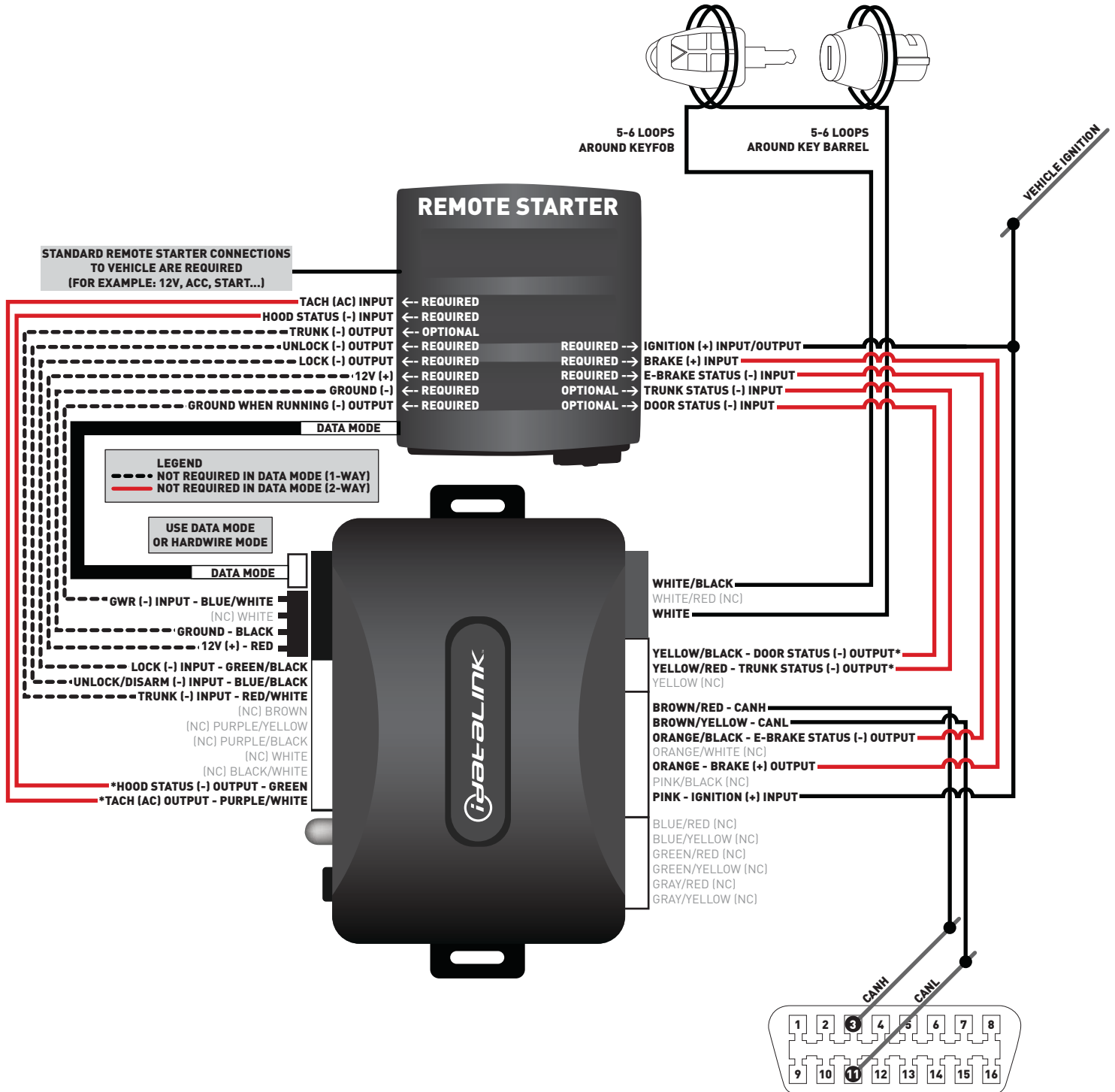
TYPE 1 - WIRING DIAGRAM



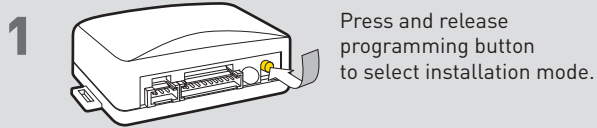
TYPE 2 - WIRE CROSS REFERENCE CHART

MAKE	MODEL	YEAR	WIRE DESCRIPTION	CONNECTOR			POSITION	WIRE COLOR	POLARITY	MODULE LOCATION	COMPONENT LOCATOR
				NAME	COLOR	TYPE					
VOLVO	C30	07-11	CanH	~	~	16 pin	3	Gray/Red	(DATA)	OBDII	~
			CanL	~	~	16 pin	11	Blue/Red	(DATA)	OBDII	~
	C70	06-11	CanH	~	~	16 pin	3	Gray/Red	(DATA)	OBDII	~
			CanL	~	~	16 pin	11	Blue/Red	(DATA)	OBDII	~
	S40	05-11	CanH	~	~	16 pin	3	Gray/Red	(DATA)	OBDII	~
			CanL	~	~	16 pin	11	Blue/Red	(DATA)	OBDII	~
	V50	04-11	CanH	~	~	16 pin	3	Gray/Red	(DATA)	OBDII	~
			CanL	~	~	16 pin	11	Blue/Red	(DATA)	OBDII	~

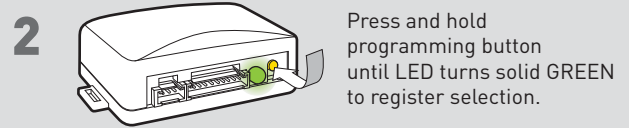
TYPE 2 - WIRING DIAGRAM



INSTALLATION MODE SELECTION

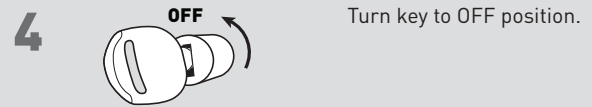
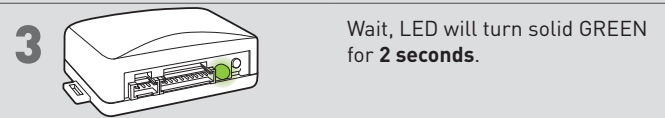
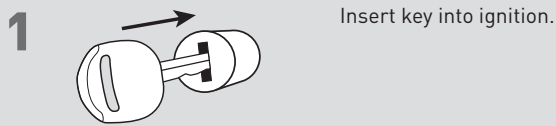


LED flashes (1X) once = DATA MODE
 LED flashes (2X) twice = STANDARD HARDWIRE MODE



! After registration, follow Factory Reset Procedure to change installation mode and restart this procedure.

MODULE PROGRAMMING PROCEDURE



IDENTIFY VEHICLE YEAR

1 Locate the Vehicle Identification Number (VIN) and identify the 10th character.



2 Match the VIN's 10th character to its corresponding year.

L → 1990	S → 1995	Y → 2000	5 → 2005	A → 2010
M → 1991	T → 1996	1 → 2001	6 → 2006	B → 2011
N → 1992	V → 1997	2 → 2002	7 → 2007	C → 2012
P → 1993	W → 1998	3 → 2003	8 → 2008	D → 2013
R → 1994	X → 1999	4 → 2004	9 → 2009	E → 2014

MODULE DIAGNOSTICS

LED STATUS	DIAGNOSTICS		
	DURING PROGRAMMING	DURING REMOTE START	WITH IGNITION OFF
Flashing RED	Missing/wrong information from firmware or vehicle	Incorrectly programmed	Incorrectly programmed or connected
Solid RED	Waiting for more vehicle information	Incorrectly programmed	Not programmed waiting for more vehicle information
Flashing GREEN	Additional steps required to complete programming	Correctly programmed and operational	False ground when running status from remote starter
Solid GREEN then OFF	Correctly programmed	Reset in progress	Reset in progress
OFF	No activity or already programmed	Invalid ground when running status from remote starter	At rest and ready for a remote start sequence

FACTORY RESET PROCEDURE

1 **DISCONNECT** all connectors from module **EXCEPT** the black 4-PIN standard or optional data connector.

2 **DISCONNECT** black 4-PIN standard or optional data connector.

3 **PRESS AND HOLD** programming button while connecting either 4-PIN standard or optional data connector.

4 When LED flashes red, **RELEASE** programming button.

5 LED will turn solid red for 2 seconds.
RESET COMPLETED.

6 **RECONNECT** all connectors.

7 Repeat programming procedure.

! Failure to follow procedure may result with a DTC or a CHECK ENGINE error message.