

Automotive Data Solutions Inc.

INSTALL GUIDE ADS-DL-GM1

GM1

AVAILABLE FOR: ADS-DL

Rev. Date: October 04, 2011

Doc. No.: ##6625##

20111004

VERSION FRANÇAISE DISPONIBLE EN LIGNE AU WWW.IDATALINK.COM

PLEASE VISIT WWW.IDATALINK.COM/SUPPORT FOR COMPLETE PRODUCT DETAILS

The brand names and logos found in this guide are property of their respective owners. Automotive Data Solutions Inc. © 2011

PONTIAC. CHEVROLET BUICK

 SATURN® SAAB Oldsmobile

ISUZU HUMMER® GMC *Cadillac*

NOTICE: The manufacturer will accept no responsibility for any electrical damage resulting from improper installation of this product, be that either damage to the vehicle itself or to the installed device. This device must be installed by a certified technician. This guide has been written for properly trained technicians; a certain level of skill & knowledge is therefore assumed. Please review the Installation Guide carefully before beginning any work.

INSTALL TYPE SELECTION

MAKE	MODEL	YEAR	INSTALL TYPE	FEATURES																				
				DATA IMMOBILIZER BYPASS	ARM OEM ALARM	DISARM OEM ALARM	DOOR LOCK	DOOR UNLOCK	PRIORITY UNLOCK	TRUNK/HATCH RELEASE	POWER SLIDING DOOR (L)	POWER SLIDING DOOR (R)	RAP SHUTDOWN CTRL	REAR DEFROST CTRL*	HEATED SEATS CTRL*	TACHOMETER OUTPUT**	DOOR STAT OUTPUT FRONT (L)	DOOR STAT OUTPUT FRONT (R)	DOOR STAT OUTPUT REAR (L)	DOOR STAT OUTPUT REAR (R)	TRUNK STAT OUTPUT			
BUICK	Allure	05-09	3	•†	•	•	•	•	•	•	•						•							
	Century	00-05	1	•	•	•	•	•								•								
	LaCrosse	05-09	3	•†	•	•	•	•	•	•							•							
	LeSabre / Ultra	00-05	3	•	•	•	•	•	•	•				•	•	•	•	•	•	•	•	•	•	•
	Park Avenue	97-05	3	•	•	•	•	•	•	•				•	•	•	•	•	•	•	•	•	•	•
	Rainier	04-07	3	•	•	•	•	•	•					•	•	•	•	•	•					•
	Regal	00-04	1	•	•	•	•	•									•							
	Rendez-vous	02-07	1	•	•	•	•	•									•							
	Terraza	05-07	3	•†	•	•	•	•	•			•	•	•			•	•	•					•
CADILLAC	CTS	03-07	3	•	•	•	•	•	•	•				•			•	•	•	•	•	•	•	
	Deville	00-05	3	•	•	•	•	•	•	•				•			•	•	•	•	•	•	•	
	Escalade	99-02	1	•													•							
	Escalade	03-06	3	•	•	•	•	•	•	•				•	•	•	•	•	•				•	
	Escalade EXT	03-06	3	•	•	•	•	•	•	•				•	•	•	•	•	•				•	
	Seville	98-03	3	•	•	•	•	•	•	•				•			•	•	•	•	•	•	•	•
	SLS	98-99	2	•	•	•	•	•	•	•				•			•	•	•	•	•	•	•	•
	SLS	00-04	3	•	•	•	•	•	•	•				•			•	•	•	•	•	•	•	•
	SRX	04-06	3	•	•	•	•	•	•	•				•			•	•	•	•	•	•	•	•
	STS	98-99	2	•	•	•	•	•	•	•				•			•	•	•	•	•	•	•	•
CHEVROLET	Astro	98-05	1	•												•								
	Avalanche	02	1	•																				
	Avalanche	03-06	3	•	•	•	•	•	•					•	•	•	•	•						
	Blazer	98-05	1	•													•							
	Cavalier	00-05	1	•	•	•	•	•		•							•							
	Express	03-07	1	•	•	•	•	•									•							
	Express	98-02	1	•													•							
	Impala	00-05	1	•	•	•	•	•		•							•							
	Monte Carlo	00-05	1	•	•	•	•	•		•							•							
	S10 / S15	98-04	1	•													•							
	Silverado	99-02	1	•																				
	Silverado	03-06	3	•	•	•	•	•	•					•	•	•	•	•	•					
	SSR	04-06	3	•	•	•	•	•	•					•			•	•	•					
	Suburban	99-02	1	•													•							
	Suburban	03-06	3	•	•	•	•	•	•	•				•	•	•	•	•	•					•
	Tahoe	99-02	1	•													•							
	Tahoe	03-06	3	•	•	•	•	•	•	•				•	•	•	•	•	•					•
Trailblazer	02-09	3	•	•	•	•	•	•	•				•	•	•	§	•	•					•	
Uplander	05-09	3	•†	•	•	•	•	•			•	•	•			•	•	•					•	
Venture	00-04	1	•													•								

* See heated accessories notice.

** Tach output is not available on vehicles with a duramax engine.

† The PK3 indicator will remain ON during the remote start sequence and will only turn OFF upon takeover.

§ Tach output is not available on these vehicles if they are equipped with a V8 engine.

INSTALL TYPE SELECTION

MAKE	MODEL	YEAR	INSTALL TYPE	FEATURES																				
				DATA IMMOBILIZER BYPASS	ARM OEM ALARM	DISARM OEM ALARM	DOOR LOCK	DOOR UNLOCK	PRIORITY UNLOCK	TRUNK/HATCH RELEASE	POWER SLIDING DOOR (L)	POWER SLIDING DOOR (R)	RAP SHUTDOWN CTRL	REAR DEFROST CTRL*	HEATED SEATS CTRL*	TACHOMETER OUTPUT**	DOOR STAT OUTPUT FRONT (L)	DOOR STAT OUTPUT FRONT (R)	DOOR STAT OUTPUT REAR (L)	DOOR STAT OUTPUT REAR (R)	TRUNK STAT OUTPUT			
HUMMER	H2	03-07	3	•	•	•	•	•	•					•	•	•	•	•	•				•	
GMC	Envoy	98-01	1	•												§								
	Envoy	02-09	3	•	•	•	•	•	•					•	•	•	§	•	•				•	
	Jimmy	98-05	1	•													•							
	Safari	98-05	1	•													•							
	Savana	98-02	1	•													•							
	Savana	03-07	1	•	•	•	•	•									•							
	Sierra / CK	98-02	1	•													•							
	Sierra / CK	03-06	3	•	•	•	•	•	•					•	•	•	•	•	•					
	Sonoma	98-04	1	•													•							
	Yukon / Denali	99-02	1	•													•							
Yukon / Denali	03-06	3	•	•	•	•	•	•	•				•	•	•	•	•	•					•	
ISUZU	Ascender	03-08	3	•	•	•	•	•	•					•	•	•	•	•	•				•	
	Hombre	98-00	1	•													•							
OLDSMOBILE	Alero 4cyl	99-01	1	•																				
	Alero 4cyl	02-04	1	•	•	•	•	•																
	Alero 6cyl	99-04	1	•	•	•	•	•									•							
	Aurora	00-03	3	•	•	•	•	•	•	•				•	•	•	•	•	•	•	•	•	•	•
	Bravada	98-01	1	•													•							
	Bravada	02-04	3	•	•	•	•	•	•					•	•	•	•	•	•					•
	Intrigue	98-99	1	•													•							
	Intrigue	00-02	1	•	•	•	•	•									•							
	Silhouette	00-04	1	•													•							
PONTIAC	Aztek	01-05	1	•	•	•	•	•									•							
	Bonneville	00-05	3	•	•	•	•	•	•	•				•	•	•	•	•	•	•	•	•	•	
	Grand Am 4cyl	99-02	1	•																				
	Grand Am 4cyl	02-05	1	•	•	•	•	•																
	Grand Am 6cyl	99-05	1	•	•	•	•	•									•							
	Grand Prix	04-08	3	• [†]	•	•	•	•	•	•				•				•	•	•	•	•	•	
	Montana	00-04	1	•													•							
	Montana SV6	05-09	3	• [†]	•	•	•	•	•		•	•	•				•	•					•	
	Sunfire	00-05	1	•	•	•	•	•		•							•							
SAAB	97x	06-09	3	•	•	•	•	•	•				•	•	•	•	•	•					•	
SATURN	Relay	05-07	3	•	•	•	•	•	•		•	•	•			•	•	•					•	

* See heated accessories notice.

** Tach output is not available on vehicles with a duramax engine.

† The PK3 indicator will remain ON during the remote start sequence and will only turn OFF upon takeover.

§ Tach output is not available on these vehicles if they are equipped with a V8 engine.

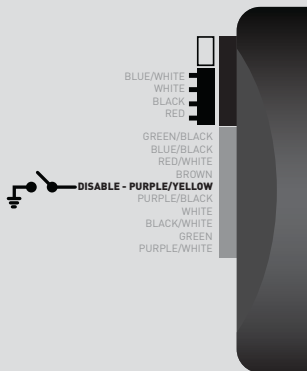
HEATED ACCESSORIES NOTICE

NOTE

- I View compatibility chart for applicable vehicles.
- II In all supported vehicle, heated accessories will automatically be activated 15 seconds after the remote starter is engaged and this only if the engine temperature is below 0 C (32 F).

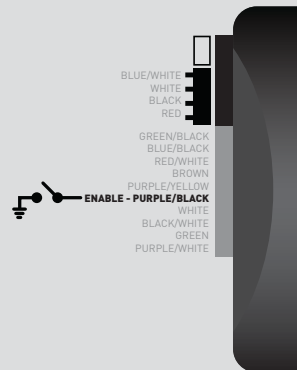
1

To disable this feature, connect [purple/yellow] wire to ground.

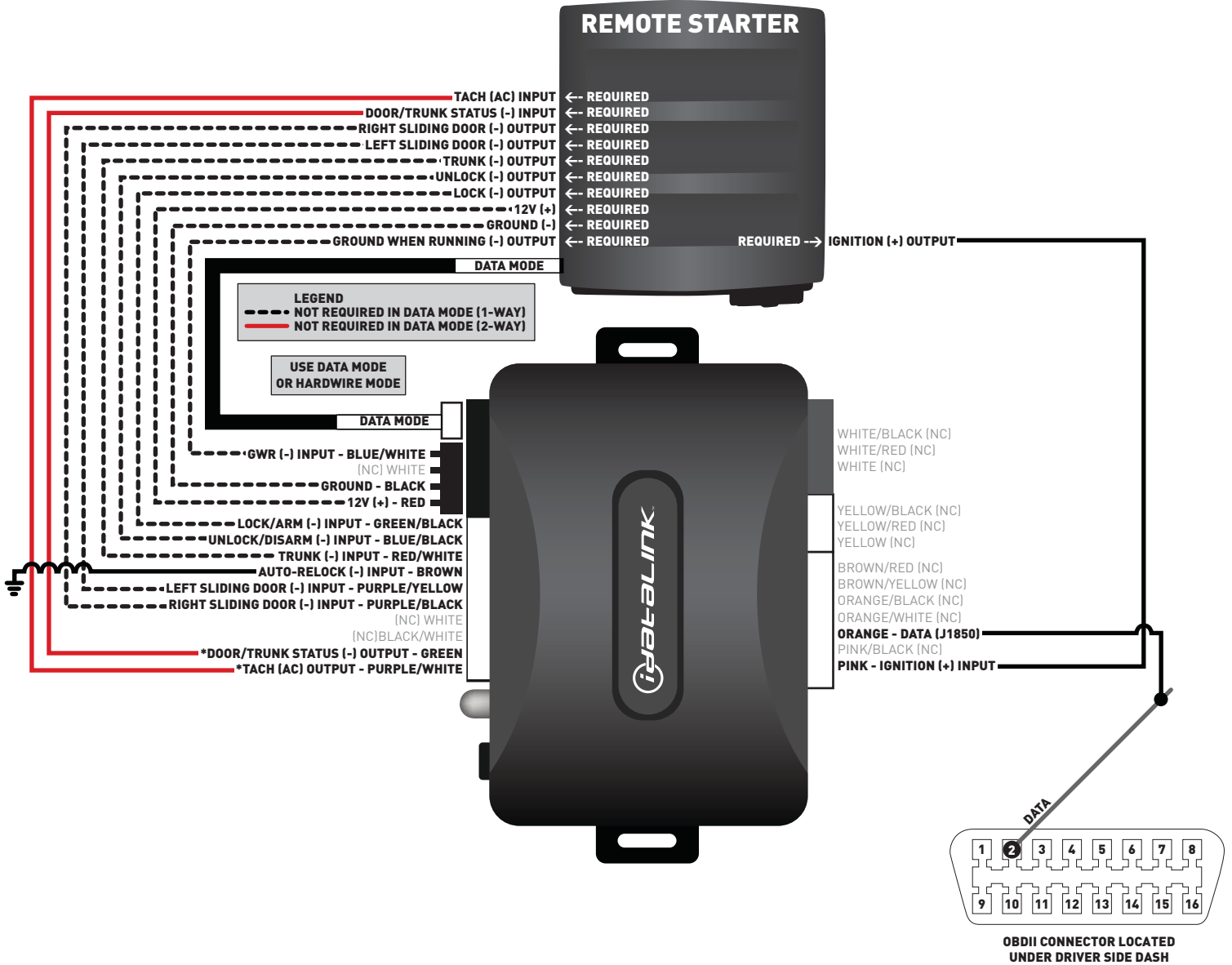


2

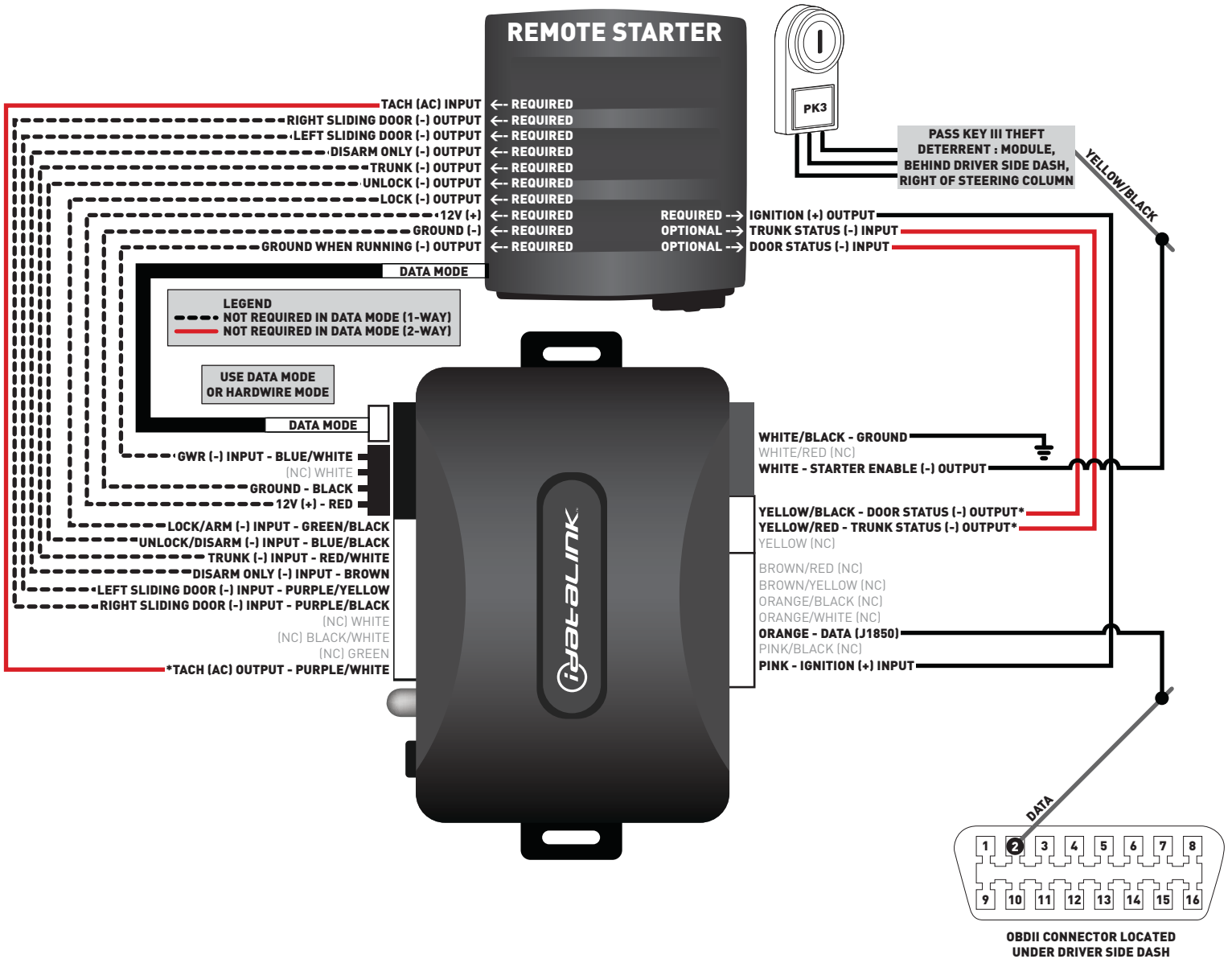
To activate applicable heated accessories upon remote start regardless of engine temperature, connect [purple/black] wire to ground.



TYPE 1 - WIRING DIAGRAM



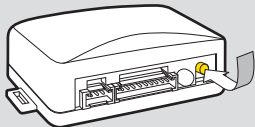
TYPE 2 - WIRING DIAGRAM




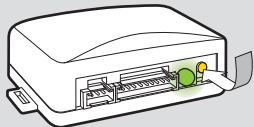
TYPE 3 - WIRING DIAGRAM



INSTALLATION MODE SELECTION

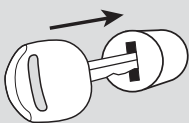
1  Press and release programming button to select installation mode.

 LED flashes (1X) once = DATA MODE
 LED flashes (2X) twice = STANDARD HARDWIRE MODE

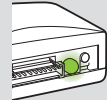
2  Press and hold programming button until LED turns solid GREEN to register selection.

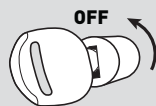
! After registration, follow Factory Reset Procedure to change installation mode and restart this procedure.

MODULE PROGRAMMING PROCEDURE

1  Insert key into ignition.

2  Turn key to START position.

3  Wait, LED will turn solid GREEN for **2 seconds**.

4  Turn key to OFF position.

5 Module Programming Procedure completed.

IDENTIFY VEHICLE YEAR

1 Locate the Vehicle Identification Number (VIN) and identify the 10th character.



2 Match the VIN's 10th character to its corresponding year.

L → 1990	S → 1995	Y → 2000	5 → 2005	A → 2010
M → 1991	T → 1996	1 → 2001	6 → 2006	B → 2011
N → 1992	V → 1997	2 → 2002	7 → 2007	C → 2012
P → 1993	W → 1998	3 → 2003	8 → 2008	D → 2013
R → 1994	X → 1999	4 → 2004	9 → 2009	E → 2014

MODULE DIAGNOSTICS

LED STATUS	DIAGNOSTICS		
	DURING PROGRAMMING	DURING REMOTE START	WITH IGNITION OFF
Flashing RED	Missing/wrong information from firmware or vehicle	Incorrectly programmed	Incorrectly programmed or connected
Solid RED	Waiting for more vehicle information	Incorrectly programmed	Not programmed waiting for more vehicle information
Flashing GREEN	Additional steps required to complete programming	Correctly programmed and operational	False ground when running status from remote starter
Solid GREEN then OFF	Correctly programmed	Reset in progress	Reset in progress
OFF	No activity or already programmed	Invalid ground when running status from remote starter	At rest and ready for a remote start sequence

FACTORY RESET PROCEDURE

1 **DISCONNECT** all connectors from module **EXCEPT** the black 4-PIN standard or optional data connector.

2 **DISCONNECT** black 4-PIN standard or optional data connector.

3 **PRESS AND HOLD** programming button while connecting either 4-PIN standard or optional data connector.

4 When LED flashes red, **RELEASE** programming button.

5 LED will turn solid red for 2 seconds.
RESET COMPLETED.

6 **RECONNECT** all connectors.

7 Repeat programming procedure.

! Failure to follow procedure may result with a DTC or a CHECK ENGINE error message.